

NON-POLLING PLACE: Members of Central Council, UMSL's student government, run a poll in the University Center lobby during the group's new-student elections. Voter turnout was low, and six candidates vied for six positions on the Council in the election [photo by Rick Jackoway].

Jackson appeals court ruling

Earl Swift

Calvin Jackson, UMSL's bookstore security guard, appealed an August decision of the U.S. District Court concerning his racial discrimination lawsuit against the university, September 27.

Jackson's attorney, David Lang, filed the appeal. The case will be heard by the U.S. Eighth Circuit Court of Appeals.

At least on UMSL administrator and two faculty members plan to create an appeal fund for Jackson to assist him in meeting the cost of further court proceedings.

The lawsuit, filed on April 1, 1977, alleged that the university had practiced racial discrimination in refusing to hire or reclassify Jackson as a campus police patrolman.

Named in the suit were the UM Board of Curators, UMSL Chancellor Arnold B. Grobman, John Perry, vice chancellor for administrative services, UMSL police chief James Nelson and police sergeant Donald King, and Paul S. Czervinske, UMSL's personnel officer at the time the suit was filed.

Court proceedings involving the case took place April 10-12, 1978. U.S. District Court Judge H. Kenneth Wangelin handed down his decision in the univer-

sity's favor August 29.

Jackson said in the suit that he was told he was not qualified for a police patrolman position because he lacked two years of college education. The job description for the position requires that patrolmen have two years of college or its equivalent in law enforcement experience.

At the close of court proceedings, Wangelin said that the issue in the case was whether or not two years of college was a necessary qualification for the job. In his decision, the judge said that although the requirement had a disparate impact upon St. Louis area blacks, it was a business necessity for the patrolman position.

"I realize that I don't have the two years of college that are mandatory," said Jackson September 25. "But I do think that I can do the job as well as anyone on the department, if not better."

"I feel that the decision he (Wangelin) made was made in the best interest of the university," Jackson said. "The judge totally overlooked the evidence and testimony that was presented to the court. I'm convinced that justice in America refers to, 'just us.'"

Lang contends that Wangelin's decision was based on a misinterpretation of the law. He

said that discrimination may be proved in court in three ways.

One, a comparison can be made between the percentage of the total work force of a given geographical area made up of a minority, and the percentage of workers in a particular job title or employment classification made up of the minority. If a significant difference in the figures is found, Lang said, there is basis for a discrimination case.

Two, one may attempt to prove that a particular job requirement discriminates against a minority, Lang said.

Third, discrimination might be proved by providing the court with the percentage of persons actually excluded by a job requirement.

"All you have to do is look at the standards the Court of Appeals set out, and you'll see they're independent standards," said Lang. "You only have to prove one." Lang said that Wangelin had required that all three standards apply to Jackson's case.

"The Court made some law which deviates from the law set down by the Eighth Circuit Court of Appeals, which he is bound to follow," Lang said. "I

[See "Jackson", page 6]

Faculty, staff differ on four-day week

Rick Jackoway

Members of the UMSL faculty and staff differ over the merits of the experimental four-day week held during the summer session, according to a survey by the UMSL four-day week committee.

According to the survey, over 42 per cent of the faculty favored staying on the five-day week regardless of monetary savings. While over 80 per cent of the staff were in favor of continuing the four-day week on some basis.

The split continued throughout the survey with over 65 per cent of the staff giving the experiment a rating of "favorable" or "highly favorable" and 53 per cent of the faculty answering in the "unfavorable" or "highly unfavorable" category.

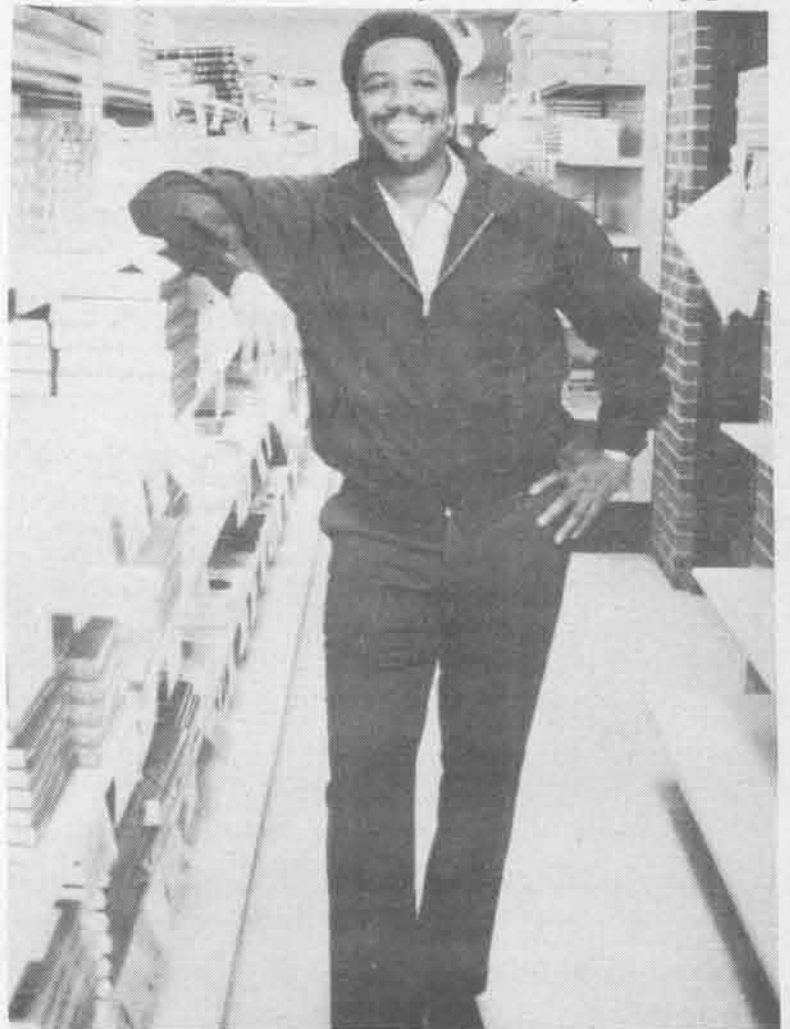
John Perry, vice chancellor for administrative services and chairperson of the four-day week committee, announced last week

the university saved approximately \$12,000 during the experimental session. "We were hoping for \$20,000, but we didn't really know what to expect," Perry said.

UMSL faculty and staff were on an experimental ten-hour Monday through Thursday schedule during the eight-week summer session from June 12 through August 4. Most buildings were closed from Friday through Sunday to increase energy savings.

Exact energy-saving figures were impossible to calculate due to price and temperature changes, Perry said. Indirect, individual savings also resulted from the four-day week. "almost 6,000 people drive cars here during the summers and with Fridays off there was a 20 per cent reduction in gasoline expenses," Perry explained.

These individual savings and the fact that "this makes people [See "Four-day week," page 2]



APPEALING A DECISION: Calvin Jackson, UMSL's bookstore security guard appealed a decision of the District Court regarding his lawsuit against the university September 27 [photo by Rick Jackoway].

University celebrates its 15th anniversary

Thomas Taschinger

In September 1963, UMSL began its existence with a grand total of 250 students and a dozen professors. In the ensuing 15 years, it has grown to a school of nearly 12,000 students enrolled in 30 baccalaureate, 16 masters and three doctoral programs.

As the university community celebrates its 15th anniversary, Chancellor Arnold B. Grobman shared his thoughts about this accomplishment and the prospects for the school's future.

"One of the most satisfying things about our 15-year his-

tory," Grobman said, "is the recent granting of full accreditation by the North Central Association of Colleges and Schools.

That's a measure of the quality of our faculty and students, something we've always tried to maintain. Previously, North Central would accredit us for a five-year period, but I'm pleased that we've now received approval for ten years," he said.

The full accreditation did strike many observers as a well-timed birthday gift, for there are relatively few 15-year-old schools which have received such an honor. The evaluating team of nine educators cited,

among other factors, a strong administration, an excellent academic core and a well-planned library as "areas of strength" at UMSL.

Yet it was perhaps inevitable that like any birthday celebration, some of the presents received were not as pleasing as others: the North Central team noted several "areas of concern" in which improvement could be made.

One of these was the "lack of a clear, widely understood...vision of UMSL's mission and goals." The team said some faculty and administration members want to develop a tradition-

al, high-quality university while others want to focus more on the special needs of the St. Louis area.

Chancellor Grobman shares North Central's concern but he thinks both approaches can be successfully combined.

"Of course everyone wants UMSL to be a high-quality university," he said. "That is understood, but I'd like to see UMSL evolve past that point and become a fine university with a sincere urban involvement.

"Over 98 per cent of our students live within a 20-mile radius of UMSL. That sort of statistic shows we must maintain

our commitment to the community," he stated.

Another problem the North Central evaluating team noted was "the need for more adequate funding if UMSL is to reach its full potential as an urban university." Similar thoughts probably could have been lifted out of any speech the chancellor has ever made on UMSL's funding.

"Out of the 50 states in America," Grobman said, "thirty-five receive more students than they lose and fifteen lose more students than they take in.

[See "Anniversary" page 6]

News briefs

Student organizations' space requests heard

The Student Space Committee will hear requests by recognized student organizations at UMSL for office space in the Blue Metal Building, October 4. The deadline for applying for space is September 29.

Only recognized student organizations are eligible for space. According to Julia K. Muller, assistant dean of Student Affairs, first preference in delegating space will be given to groups which have previously had office space and which have used it effectively. Second preference will be given to organizations that have not previously had space.

In addition, the committee will expect organizations to have a well-defined plan for the use of offices, and will give preference to groups willing to share space with other student organizations.

According to Muller, groups should use the offices for primarily office functions, and not for storing equipment.

Student groups may contact Muller at (453)-5211.

'Career' course offered

Professionals contemplating a start in a new career can receive guidance on making that transition through a course offered by UMSL beginning Oct. 5.

"Making a Successful Mid-Life Career Change" will help participants evaluate and assess career goals to help them avoid becoming trapped in a dead-end career position.

"The course has been developed to help professionals rationally plan their future and uncover career alternatives," said R. Terrance Etter, assistant business school dean for UMSL Continuing Education.

Etter and his wife, Rosemary, director of counseling and career placement at Maryville College, will teach the course, which will meet Thursdays, Oct. 5 - Nov. 30, from 6:30 to 9 pm in the J.C. Penney building on the UMSL campus.

Enrollment in the course will be limited to 20 persons.

For more information on course content and fees contact Dave Klostermann of UMSL Continuing Education at (453)-5961.

'Landscape Design' series offered here

The third installment of a "Landscape Design" course series will be offered by UMSL, Oct. 10-12.

Topics to be covered in "Landscape Design Course III" include plants and design, design for easy maintenance, landscape accessories and standards for evaluating landscape design.

Students who wish to obtain credit from the National Council of State Garden Clubs Inc. may take an optional examination Oct. 12.

Classes will meet Oct. 10 and 11 in the J.C. Penney building, 8 am - 5 pm, and 8 am - noon on Oct. 12.

The fee for the complete course is \$25. Students may also enroll in the course for one day for \$15, the optional exam costs \$1.

The Landscape Design series is co-sponsored by UMSL Continuing Education, University of Missouri Extension, the Missouri Botanical Garden, the Federated Garden Clubs of Missouri and the National Council for State Garden Clubs Inc.

For more information or to register contact Dorothy Jones of UMSL Continuing Education at (453)-5961.

'Big Band' course here

Count Basie, Duke Ellington and Woody Herman are a few of the personalities who will be covered in "The Golden Age of The Big Bands," a course offered by UMSL beginning Sept. 27.

The course will be taught by KMOX-radio's Charlie Menees.

Menees, a long-time observer of the St. Louis jazz scene following 20 years as jazz critic for the "St. Louis Post-Dispatch," will use selections from his collection of big band recordings and taped interviews with big band personalities as material for the course.

The course will focus on the Swing Era (1935-45) starting with Benny Goodman's session on Aug. 21, 1935 at the Palomar Ballroom in Los Angeles.

Classes will meet Wednesdays, Sept. 27, Oct 25, 6:30-9:30 pm in the J.C. Penney building. The fee for the course is \$25.

For more information or to register, contact Dorothy Jones of UMSL Continuing Education at (453)-5961.

Special program offered for matured students

UMSL will offer a "return to college" program beginning Oct. 12.

"Learning and Study Skills for Mature Returning Students" is designed to ease the transition back to college for those who have been absent from the classroom for an extended period. Topics to be covered include time management, study techniques, and reading and writing effectiveness.

The program, taught by UMSL faculty and staff, will be held Thursdays, Oct. 12 - Dec. 7 from 9:40 -11:30 am in the J.C. Penney building.

The fee for the course is \$31.

For more information or to register, call Dave Klostermann of UMSL Continuing Education at (453)-5961.



BORED: Members of Central Council's grievance committee conducted an open forum in the University Center September 14. Turnout at the forum, designed to gather student complaints about UMSL, was low [photo by Earl Swift].

Four-day week

from page one

more conscious of the need of energy conservation" are the main benefits of the experiment, Perry said.

The major complaint about the four-day week, Perry said, came from faculty and staff members with families. But, according to the survey, "scheduling for the other family members" ranked fourth, behind fatigue, too late and too early starting times, as the "least favorable aspects of the four-day week."

Faculty members like Eric Block, associate professor of chemistry, also complained about the effect of the four-day week on graduate and research work. Block is the director of chemistry's graduate studies program.

"The four-day week is not

conducive to research," Block said. "Graduate work is a seven-day a week program; you cannot conduct experiments on that schedule."

"As long as we are being called the University of Missouri - St. Louis and not the University of Missouri Junior College we should seek to expand not curtail services," said Block.

Perry said they had alleviated that problem by air-conditioning research areas "24 hours a day, all week long."

With the offices excluded," Block pointed out, "It was like being on a little island and there is almost no room to write out experiment results in the labs that are air-conditioned."

For the future, Perry said he hopes the four-day week may be expanded to the entire summer

instead of just the eight-week session.

"But I doubt there is very much a chance of having a four-day week during the fall and winter semesters," he said.

Scheduling classes and finding spaces for extra classes, Perry said were the major reason why the four-day week would be impractical year-round.

"I think it was a favorable experiment and we should look at continuing it," Perry said.

Block stated what, according to the survey, is a predominant feeling of a large percentage of the faculty, "Going on a four-day week can seriously hurt this University."

Student opinion was not surveyed, but Perry said he would seek student input before drafting the final report on the four-day experiment.

DRESS OPTIONAL: TOGA NOT REQUIRED!

"IT IS WILD AND CRAZY... LEAVES ONE FEELING LIKE AN ANXIOUS FRESHMAN PLEDGE WHO AT FIRST FEELS A LITTLE LEFT OUT OF THINGS, BUT WHO, IN THE END, CAN'T RESIST JOINING IN ALL THE FUN."

"IF YOU'RE IN HIGH SCHOOL, IF YOU'RE IN COLLEGE, IF YOU'RE OUT OF COLLEGE, IF YOU'VE EVER HEARD OF COLLEGE, A NATIONAL LAMPOON FAN; A SATURDAY NIGHT LIVE FAN, or you're just ready for some wild college humor you will have a laughing good time at 'Animal House'."

"VERY FUNNY! The film makers have simply supplied the appropriate party-girdles, crew-neck sweaters, frat-house initiation rites and rituals of the toga party. AND LET ALL THAT IDIOCY SPEAK - VERY ELOQUENTLY, AND WITH A LOT OF COMIC FERVOR - FOR ITSELF!"

"FRENETICALLY FUNNY... A RAUCOUS REMEMBRANCE OF THINGS PAST AND PASSIONATE. Good innocent fun mixed with enough wickedness to give it some character."

"RAW, RAUCOUS AND GLEEFULLY VULGAR, 'National Lampoon's Animal House' has but one redeeming social value... IT IS CONSISTENTLY VERY FUNNY! At a time when our nation's screens positively drip with either goo or gore, it comes as a healthy - and most welcome - kick in the solar plexus!"

"A RIOTOUS FARCE... HERE, AT LONG LAST, are movie characters who embody the true spirit of American higher education."



It was the Deltas against the rules... the rules lost!

NATIONAL LAMPOON'S ANIMAL HOUSE

A comedy from Universal Pictures
THE MATTY SIMMONS IVAN REITMAN PRODUCTION
"NATIONAL LAMPOON'S ANIMAL HOUSE" JOHN DELUSHI TIM MATHESON JOHN VERNON VERA BLOOM THOMAS HULCE and DONALD SUTHERLAND Produced by MATTY SIMMONS and IVAN REITMAN Music by ELMER BERNSTEIN Written by HAROLD RAMIS DOUGLAS KENNEY & CHRIS MILLER Directed by JOHN LANDIS Song ANIMAL HOUSE Composed and Performed by STEPHEN URSHOP

ALTON CINE BELTLINE & WASHINGTON	NOW SHOWING	DES PERES 4 CINE I-270 & MANCHESTER
JAMESTOWN MALL LINDS & OLD JAMESTOWN	MARK TWAIN LINDBERGH AT GRAVOIS	NORTHWEST NORTHWEST PLAZA SHOP CTR.

Oldham criticizes UM policy

Rick Jackoway

The University's Affirmative Action program was criticized in a statement Miriam Oldham, UM curator from the St. Louis area, read to the Board of Curators September 21.

Oldham pointed to the black student attrition rate and the University's record in hiring, promoting and granting tenure to black faculty as factors in the ineffectiveness of affirmative action programs.

The statistics on the University policy on hiring, promoting and granting tenure to blacks indicate, according to Oldham, "that little positive change is in evidence. For example, out of a total faculty membership in excess of 5,000, only 14 blacks have tenure. This fact becomes further startling by the condition which exists on the Rolla campus where there is no black faculty.

"At the Kansas City campus, with over 600 faculty members, there are only nine black faculty and of these two are tenured. The Columbia campus has 2,200 plus faculty and only 35 are black. According to University records, only nine of these black academicians are tenured."

She continued, "Since the first black faculty arrived on the Columbia campus, in 1969; only

one has been promoted to Professor. In addition, of the 78 administrative positions, only two are filled by blacks."

Oldham said, "At the Columbia Medical School, there are 500 plus professionals; of these there are only six blacks. There is one black professional listed at the Kansas City Medical School."

"In Central Administration, we have 127 executives and one black, 174 professionals and two blacks, 191 clerical with 16 blacks; eleven of whom are in Extension. On the Rolla campus, we have 501 full-time non-academic employees, only 13 blacks."

At UMSL, Oldham said, blacks hold 16 full-time positions out of a faculty in excess of 600, and only three are tenured.

UMSL Chancellor Arnold B.

Grobman said that on this campus eight per cent of the faculty are minorities and over the last four years minorities have been recruited at a rate of fifteen per cent.

Of the black attrition rate, which Oldham said is 87 per cent on the residential campuses, Grobman said, "Black students generally come from a low socio-economic group and they're often forced to attend preparatory schools that are overcrowded. The result is they're not prepared."

Oldham asked the Board to help correct the present conditions.

Oldham said, "All of these conditions exist because we have failed to vigorously pursue the implementation of an effective and meaningful Affirmative

[See "Oldham", page 5]

Homecoming plans set

The homecoming parade, held the past two years, will be cancelled because of financial considerations, according to Donna Denner, homecoming committee chairperson.

"Only a few organizations have been able to afford the expense involved and have had the manpower available to construct floats (for the parade),"

Denner said, "It is also becoming increasingly difficult to find trucks to pull the floats."

This year, Denner said, "in an attempt to create more involvement and reduce expenses, the Homecoming Committee has recommended using sign displays depicting birthday greeting for UMSL."

UMSL's fifteenth anniversary is the theme of the homecoming week, October 23-28. Judging criterion for the sign contest will be based on adherence to the theme, originality, creativity, and workmanship.

The contest is divided into four divisions: fraternity-sorority organizations, curriculum related organizations, special interest groups, and religious student organizations. Trophies will be awarded to the winners in each category.

Regulations require the signs be no longer than ten feet with no restrictions on height. The signs must also be free standing or staked to the ground.

The homecoming week includes an UMSL soccer game at 1:30pm and a dinner dance at 6:30pm, both Saturday, October 28.

At the dinner-dance, to be held at the Chase Park Plaza Hotel, the announcement and crowning of Homecoming King and Queen will be announced.

Applications for king and queen candidates will be available at the Information Desk. Deadline for filing applications is 4:30pm, Friday, October 20. Elections will be held Tuesday and Wednesday, October 24 and 25 at both the University Center and the Social Science Building.

News briefs

Assertive training course to be offered downtown

UMSL will offer "Assertive Training for Men and Women" at UMSL Downtown, 522 Olive Street, beginning Oct. 17.

The course teaches participants to express ideas, feelings and wants in a direct way without alienating others.

"Assertive Training," part of UMSL Continuing Education's Discover Program for Women, will meet Tuesdays, Oct. 17, Nov. 21, 6 - 8:30 pm.

The fee for the course is \$43.

For more information or to register for the course, contact Dorothy Bacon at UMSL Downtown, 621-2102.

U. Players present 'Gypsy'

The University Players will present their first production of the season, "Gypsy," October 26-29, in the Benton Hall Theatre. Curtain time is 8 pm each evening.

The musical is loosely based on the life story of Gypsy Rose Lee and features such songs as "Let Me Entertain You," "Everything's Coming Up Roses," and "Together, Wherever We Go."

UMSL senior Debi Brown plays the lead role of Louis in the production directed by Denny Bettisworth, director of theatre at UMSL. Jim Fay is the stage designer and Warren Bellis, and associate professor, is the music director. Choreography is by Michael Thomas.

Reserved seat tickets are \$3 and may be purchased at the door.

Dance course given

"Conditioning Through Dance" will utilize modern dance techniques to help students according to choreographer Sherry Londe, who will lead the course.

The course will meet Wednesdays, Oct 11 - Dec. 6, from 7 - 8:15 pm in the J.C. Penney Building.

The fee for the course is \$35.

For more information or to register contact Dave Klostermann of UMSL Continuing Education at (453)-5961.

Symington scholarship applications available

The Steward and Evelyn Symington Scholarship applications are now available in the Political Science office, 807 Tower. A \$200 award will be given to a political science major on the basis of GPA, outside and campus political activities, and financial need. Any political science major may apply. The deadline for applications will be December 1, 1978.

Who's Who nomination blanks due October 5

Nomination blanks are available for individuals wishing to nominate UMSL students for inclusion in the national publication Who's Who Among Students in American Universities and Colleges.

Nominees must be juniors, seniors, or graduate students at UMSL whose minimum grade point average is 2.5. Other criteria include a) participation in academic activities, b) participation and leadership in extracurricular activities, and c) citizenship and service to UMSL and/or to the community.

A committee of students and staff will screen nominations prior to compiling a final list of candidates. The nomination blank is critical, and it should be filled out carefully, correctly, and completely.

Completed nominations must be submitted to Julia K. Muller, assistant dean of Student Affairs, 301 Woods Hall, no later than 12 noon on Thursday, October 5, 1978.

Library plans new borrowing policy

Major changes in library borrowing procedures are being considered and will probably be proposed to the University Senate next month, Thomas Jefferson Library officials told members of Central Council, September 17.

Proposed changes include and extension of the loan period and the institution of daily fine structures. The 14-day grace period will also be eliminated under the new structure.

The new structure calls for the extension from 14 to 21 days for borrowing books. This is in response to student requests for a longer loan period, Robert Miller, library director to the Council.

While the loan period is being increased by seven days, a 14-day grace period, time after due date without financial penalty, will be dropped under the

new plan.

The new plan allows for a ten cent a day fine to be charged after the due date. A maximum of \$2.10 has been set for fines.

Under the present system a maximum \$5.00 service fee is charged for any book returned after the invoice date, fourteen days after the due date. The proposal policy extends the invoice date to 21 days after due date.

The maximum fee under the new policy would be \$7.50, \$5.00 service fee plus \$2.10 for accumulated daily fees. If the book is returned within four weeks of the invoice date, the \$5.00 service charge is waived.

If the Senate passes the proposal it will go into effect at the beginning of next semester.

The library has requested student, faculty and staff input on the new proposal.

timothy's too
FAMOLARE
shop

the famous
famolare
get there

"merlot" camel, mahogany kid \$37

timothy's too famolare shop
284 plaza frontenac, (314) 569-0050
also at timothy's
174 st. clair square
(618) 632-1050

**SOME OF THE SMARTEST
YOUNG EXECUTIVES
DON'T WORK FOR BUSINESS.**

In the Navy, a twenty-two-year-old ensign can run a division of thirty men. By the time he makes lieutenant - age 24 or 25 - he can have more managerial experience than most civilians do at thirty.

Send your resume to:

Lt. Don Spruill, 210 N. 12th St., St. Louis, Mo. 63101;

Tel: 314-268-2505.

NAVY OFFICER. IT'S NOT JUST A JOB, IT'S AN ADVENTURE.

CONTACT LENS WEARERS

Save money on your brand name hard or soft lens supplies. Send for free illustrated catalog. Contact Lens Supply Center, 341 E. Camelback, Phoenix, Arizona 85012.

The CURRENT

needs writers,

artists...



viewpoints

editorial

Four-day week should be continued, expanded

The four-day week committee has released its initial analysis of the experimental four-day week program UMSL attempted during the summer session. The campus saved approximately \$12,000 in energy costs by closing the majority of its operations Friday, Saturday and Sunday for eight consecutive weeks. This savings is not as high as the university expected and has been termed a "modest savings" at most by some.

We, however, argue that a \$12,000 savings in energy costs is not an insignificant achievement. The four-day week is a worthwhile program and despite its difficulties should be continued again next summer and even extended beyond the eight-week session to include all summer and interim sessions.

When UMSL decided to experiment with a four-day work week, it openly admitted its concern about energy conservation. UMSL took the initiative needed to take a serious step toward controlling energy costs and eliminating at least some of the energy waste. A savings of \$12,000 could easily be increased with more commitment. The \$12,000 savings is not the disappointing result of UMSL experiment. The disappointment is in the responses and attitudes of the majority of faculty members and from several staff members.

In a survey of faculty and staff taken in August by the four-day week committee, a majority of faculty members found the four-day week unfavorable. The major complaint from faculty comes from the graduate programs and science departments. Various faculty members argued that it was impossible to carry on research within a four-day week.

However, science laboratories and specific graduate studies were accommodated during the four-day week. Air conditioning was left on seven days a week for the offices and labs concerned. Researchers and students involved had access to their facilities like any other time.

Faculty complaints about hindering research then seem invalid. Their complaints seem to be more complaints of inconvenience

rather than interference. During the four-day week, on Fridays faculty did not have access to the UMSL food services and other campus offices were closed. These factors would hardly interfere with the research taking place, but would indeed, inconvenience the researcher some. When attempting to conserve energy, personal inconvenience can be expected or perhaps some personal sacrifice.

Staff response was, for the most part, quite favorable. Despite longer working hours, shorter lunches, earlier starts, later finishes, etc. (conditions faculty were not as subjected to) the majority of the staff found the experiment to be favorable.

As usual, student response was not evaluated. They were not included in the survey. Once again, a university, presumably centered around students, eliminates any student input into a significant decision. Student response was in fact, supportive of the experiment.

We do not intend to oversimplify the difficulties in trying to condense five days of activity into four. But, instead, suggest that these difficulties could be worked out in order to achieve the goal of energy conservation. Energy conservation is not an easy task for a people that has grown accustomed to energy waste. What better place to begin to eliminate waste than at our universities?

Long range possibilities for the four-day week are indefinite. Talk of switching to a four-day week in future fall and winter semesters seems almost an impossibility with problems of scheduling and larger numbers of students and more classes. Yet, an eventual process might lead to such an arrangement.

It is, without a doubt, worthwhile and necessary to continue to use a four-day week as often as is possible. Since money is short and cutbacks must be made, energy conservation is the most acceptable means of adapting to our financial inefficiencies. The UMSL community, (faculty, staff and students) cannot accept further cutbacks in academic programs or operational costs. The four-day week's virtues far outweigh its vices.

letters

Accuses newspaper of negative reporting

Dear Editor,

Your September 14th issue reported UMSL's NCA accreditation with a negative emphasis not present in either the Post-Dispatch or the Globe-Democrat articles. Both well-read St. Louis dailies referred to it as "a top accreditation" with in-depth looks at the several strong areas within the University, including "an excellent academic core with a strong faculty that conducts a significant amount of research activity. The University's College of Arts and Sciences was singled out for special mention by the team," (Post-Dispatch, 9/14/78). The Globe also included a recent (9/19) editorial citing UMSL's top accreditation.

The Current, on the other hand, headlined the article "Evaluation Shows Weaknesses" and inserted only two phrases of strong points, seemingly by accident.

I question the motives of the Current. Surely news reporting does not have the sole purpose of searching for weaknesses in any program or event on cam-

pus. An excellent example of this is the front page of the Sept. 14th issue. Besides the accreditation headline, there were the following: "Lack of Members May Close APO" and "Math 02 enrollment increases." Granted loss of group membership and increasing enrollments in non-degree credit classes are of interest, but I have yet to see the Current print anything positive in the news section. If it doesn't smell of corruption, injustice, or ineptness it won't appear in the news section.

If two highly circulated major papers like the Post and Globe can objectively report on an accreditation that just may bring increased funding to the campus, due to promoting and reporting on the excellent programs at a young university like UMSL, then the Current should break their tradition of negative news by showing pride in UMSL—a university that has just secured a glowing ten-year accreditation.

Jeanne L. Grossman

Criticizes previous national health letter

Dear Editor,

Your correspondent, Mr. Mark A. Bouillon, has truly hung on you and your readers concerning nation, health insurance (September 21, 1978). Leaving aside the most obvious point, that he wants his behavioralism and his voluntarism too, let's extend his arguments a step further.

If "Today, much illness is willful," then we can freely choose at least two courses of action, assuming that our Judeo-Christian tradition excludes the "leave the sick to writhe and die" alternative.

Either we limit our choices as consumers by restricting, even outlawing, such things as junk foods, toxic farm sprays, sugar-coated everything, carcinogenic preservatives, etc. Or, we abolish all health insurance, because those who do not "will to be ill" won't need it and those who do, deserve to be uninsured. This latter alternative is an enormous favor for private health insurance companies anyway. Such insurance did not exist until nineteenth century medicine began to produce enough reliably healthy people. There was no profit in premiums paid exclusively by the chronically ill, who numerically dominated pre-modern societies.

The history of modern public health and medicine deserves far

greater accuracy than Mr. Bouillon provides. Private health insurance companies are not known for their policy of plowing profits into public health projects, whether to improve nutrition or sanitation. Community agencies funded by taxes do that job. And they do it remarkably well, in projects for water chlorination, sewage control, pure food and drug laws, zoning ordinances, playgrounds and athletic fields, etc.

The antibiotic revolution has its roots at the turn of this century, not just the 1950's. And antibiotics have provided important controls for a wide range of afflictions, including TB and typhoid. But tuberculin was first extracted from Mycobacterium tuberculosis in 1890 by Robert Koch, for use in accurate diagnoses. And typhoid, caused by Salmonella typhosa bacterium, remains a ubiquitous threat. It can be controlled, not by individual acts of willpower-but rather by public, enforceable standards of hygiene, especially amongst food-canners and slum-landlords.

At least one department on every campus instructs people in how to research, analyze, and communicate evidence, not merely opinion: try HISTORY.

yours sincerely,
DeLloyd J. Guth

CURRENT UNIVERSITY OF MISSOURI — ST. LOUIS

Editor.....Genia Weinstein
Production Editor.....Michael Drain
Business Manager.....Donna Denner
News Editor.....Earl Swift
Assistant News Editor.....Rick Jackoway
Features Editor.....Andrea Haussmann
Fine Arts Editor.....Daniel C. Flanakin
Sports Editor.....Jeff Kuchno
Photo Director.....Dan Swanger
Assistant Photo Director.....Dale Nelson
Graphic Artists.....Steve Flinchpaugh
Jonathan Davis

Production Assistants.....Tony Bell
Linda Tate
Steve Flinchpaugh
Don Kunstel
Ad Production.....Dale Nelson
Gary Sztukowski
Jonathan Davis
Advertising Sales.....Rick Jackoway
Typesetter.....Andrea Haussmann
Assistant Typesetter.....Mary Hofer
Copy Editor.....Bev Pfeiffer Harms
Distributing.....Bob Henslee

The Current is published weekly during the semester in room 8 in the Blue Metal Building, 8001 Natural Bridge Road, St. Louis, Missouri. Phone [314] 453-5174.

Financed in part by student activity fees, the Current is published by a student staff and is not an official publication of the University of Missouri. The university is not responsible for the Current's contents and policies.

Editorials are the opinion of the editor and/or the editorial staff. Articles labeled "Commentary" are the opinion of the individual writer.

Advertising rates available upon request. Member Missouri College Newspaper Association.

Letters to the editor are encouraged and should be typed, double-spaced. Letters under 300 words will be given first consideration. No unsigned letters will be accepted but names will be withheld upon request.

Letters may be submitted either to the Information Desk in the University Center or to the Current office, room 8 Blue Metal Building.

Interest in Central Council waning

Earl Swift

Critics of Central Council, UMSL's student government, have pointed out that student interest in the group has waned over the last two years. The critics have arrived at a number of explanations for the organization's decay. Council's lack of directions and goals; a lack of communication within the group; a lack of initiative on the part of Council's members; and the contention that Central Council is attracting a different type of student to make up its membership than in years past.

The organization serves as a lobbying group to present student viewpoints to the UMSL administration. Its problems have not surfaced just this year. They became apparent during the 1977-78 school year, when the Council's woes reached a level of crisis.

In April, 1977, Charles Mays was elected to the position of student body president. The title is an unusual one, for although student body presidents

seemed to split the group into several factions. Dan Crone was favored to win the election. Founder and president of The Fighting Spirit, a student investigatory group, Crone had a reputation as a devil's advocate at Council meetings. His major opponent was seen to be Barb Bufo, former chairperson of the group's Course Evaluation committee and very involved in the workings of the Council. Mays and two other candidates were not considered to be serious contenders.

When Mays defeated Crone by 38 votes, the Council took his victory with an air of surprise and indignation. The majority of the group's membership seemed to resent Mays' lack of experience in student government. The group alienated him, feeling that he could do nothing to benefit Council until he knew what he was doing.

That summer, Mays did little to educate himself in the workings of Council. Consequently, the group approached the beginning of the academic year with a very bad attitude. The Council was split into those members backing Mays, those favoring Crone, and those supporting Bufo, who was elected chairperson of the group. A great deal of discussion, but very little work was accomplished at the meetings.

Gradually, members of the Council began to lose interest in the group's activities. Communication and planning were, according to some members, practically non-existent.

Many felt that Council was ill-prepared for the UM Board of Curators meeting at UMSL, which decided the incidental fee structure for the 1978-79 academic year.

In the early part of the last winter semester, UMSL Chancellor Arnold B. Grobman met with the faculty and proposed the formation of a faculty task force to review the structure of university governance. The force, as its name would suggest, was to have no student representatives. Two students were present at this meeting of the faculty, and neither were members of Central Council.

With the degeneration of interest taken by the student body and the group's members toward it, Council seemed to grow insincere. At one meeting, a vote had to be taken to determine whether a television broadcasting a football game should be turned off.

When Paul Free was elected student body president, he seemed to have quite a task before him in restoring some of Council's credibility and integrity. Many of last year's problems seem to have carried over to this year's Council.

Lack of communication, many feel, is the greatest problem facing the group now. New members of the Council seem not to have been briefed on the structure of the University administration and campus governance.

In an informal poll taken by the Current, September 26, members of Council were asked 20 questions about their duties as representatives and the university administration. The poll was given to 19 representatives, approximately one-third of Council's present membership.

To, "Do you know who the three UMSL vice chancellors are?" 16 of the representatives said no. All but three of those polled said yes to, "Have you met yet this year with Dean Conney Kimbo?" Kimbo is Dean of Student Affairs.

When asked, "What are your duties as a

representative?" Council members' responses included, "Basically, keeping the fraternity informed on what Council is doing;" "Represent the Greek point of view;" "Mostly to answer phones, and to be available whenever a student needs something;" and, "To run polls."

To the question, "What is the purpose of Central Council?" the responses included, "That is unknown;" "To represent student to other bodies;" and, "To have some input on the decisions made on campus and to express the student viewpoint on decisions made."

Three of the representatives said that they did not know what the University Senate is. Fourteen did not know who the chairperson of the Senate is.

Ten correctly identified James Olson as president of the UM system. When asked, "Who is the highest ranking member of Central Council?" 12 members said that Paul Free held Council's highest post. Six correctly stated that the position of chairperson is the highest ranking.

Eleven representatives said that they had read the Central Council's constitution. Eight said that they felt the Council was not effective. Three said they felt the group was effective, "to a degree."

Eight of the representatives said they did not know the Council office phone number. Seven said they had not yet established their office hours.

All but two said the representatives should be expected the answers to the questions asked in the poll. Of the 19 Council members questioned, 12 were representatives elected by the student body.

Another problem carried over to this year's Council concerns the structure of the group. As stated before, the student body president is not the head of Council. As was witnessed last year, however, the president has quite a bit to say about the group's programs and goals. Council should not have been damaged to the extent that it seemingly was by the lack of action on the part of the president. According to the group's constitution, Council and student body president are separate entities.

This year's Central Council is faced with newer problems as well. A major concern of many is that Council is attracting a different type of student to its membership. It is felt by some that Council at present is made up of representatives urged to run for election by other organizations of which they are members, and by students who have lost interest in the group since election day. Consequently, the majority of the Council's membership seems apathetic concerning the organization's work.

Another major concern of some members of Council is that the group is not currently faced with any pressing issues. Controversy has a tendency to unite Council for short periods of time, but since April there have been few issues to tackle.

A barometer of Council's loss of popularity might be the falling number of candidates running for office in the group's elections.

In April, 1977, five students ran for student body president. During new-student elections in fall, 1977, 17 candidates competed for 6 representative seats on Central Council.

In April, 1978, two candidates vied for the student body president position. Cortez Lofton ran unopposed for student body vice president.

Earlier this week, six first-semester students ran for six representative positions on Council.

a closer look



serve on the Council only in a representative capacity, they generally receive credit for the group's successes and failures while occupying the office.

Mays' administration followed that of Curt Watts, considered by some to be the most successful in Council's history. Under Watts, the group pushed for the preservation of the Old Administration Building and outdoor pool, secured student control of the Student Activities Budget Committee, lobbied for the construction of a driveway from the main campus to Marillac, began publication of the yearbook, and instituted a housing referral service. The Council was not successful in all of its ventures, but a substantial effort was made by its members to have things run smoothly. Communication within the organization was speedy and effective. Representatives seemed to take their jobs seriously. Members of the organization maintained office hours, and the group's paperwork was completed. In short, Central Council "worked."

Mays' victory in the general elections marking the end of Watts' administration, however,

Oldham

from page 3

Action Program. The alarming attrition rate among black students is symptomatic of this institution's failure to make a valid and active commitment to student rights and needs. These conditions are symptomatic of a deep seated flaw in the credibility of our institution; a failure to meet accountability standards."

She continued, "Today, I am asking you to join me in efforts to bring about immediate and dramatic rectification of these shocking conditions which currently prevail. We must offer reasonable opportunities for black students to pursue successful academic careers."

"There is a pressing need for the acquisition of black counselors who are especially prepared to employ preventive as well as

corrective measures for black students who may have adjustive difficulties. We need to devise a clearly stated written policy concerning the standards which must be maintained in order to secure scholarship aid beyond the first year of academic involvement. This policy statement must be given and explained to each student before admission."

"The Board must make a stronger commitment to Affirmative Action. We must seek to convey to all administrative personnel, the firm and active support which this Board must be prepared to give to the Affirmative Action Program, that we reaffirmed October, 1977.

This applies to all campuses, as well as to Central Administration. Specifically, this means the

hiring of additional black administrators, black faculty and staff on a full-time basis throughout the University system."

Oldham concluded by saying that some employees are attempting to correct the problems. But, Oldham said, they "must have our support. They must be recognized and rewarded, not penalized."

Reaction to the statement was mixed with UM president James Olson reportedly saying the administration was working on the problem, but were not doing as well as they could.

C.R. Johnson, curator from Springfield, was reported to have said, "Miriam, I think you are overly critical, really. I certainly think all the campuses are trying."



Don't know what it is?
Look in the CURRENT CLASSIFIEDS!

Jackson

from page 1

think the case will revolve more around that than on whether two years of college is a business necessity."

"The judge's position on the law is that even if you have a requirement that will disqualify more blacks than whites, if that requirement does not have an effect on the employer in getting a representative number of blacks on the work force, you haven't proved discrimination."

Lang said that he was confident the decision would be reversed by the Court of Appeals. "Unquestionably," he said, "I think that any panel of the Court that hears this case will reverse it. I've never been more confident of reversing a case as with Calvin Jackson's case. I've had Wangelin's decisions overturned before."

"I don't think that that was one of Judge Wangelin's better

opinions," he said. "He was wrong, in my opinion, on both the law and the facts of the case."

"I can't afford to be as optimistic about the Appellate Court as I was about the lower court," Jackson said. "I'm not going to get my hopes up too high, but I figure I have about an 80 per cent chance of winning."

During court proceedings in April, Jackson testified that he applied for the campus patrolman position several times while employed as a security guard, beginning in January or February of 1972.

Jackson said that when the university did not respond to his applications, he sent "at least four" position reclassification questionnaires. Jackson said that he filled out several of the forms in the presence of Tom Kitta,

assistant bookstore manager, and that he had sent them to the personnel office via the campus postal system.

Czervinske, who served as personnel director from November, 1973, until his resignation in June, 1977, testified that he had not seen any of Jackson's applications or reclassification forms until he became aware of an investigation by the Equal Employment Opportunity Commission (EEOC) into Jackson's case. Jackson filed a grievance with the EEOC before filing his lawsuit. At that time, Czervinske said, he found two of Jackson's applications in the personnel office.

Jackson testified that in April, 1976, he applied for the position of police sergeant. A job opening announcement had been posted listing the requirements

for the title as a high school education or the equivalent.

Jackson said that he was interviewed for the position on April 18, 1976, and that three days later he received a phone call from Czervinske, who asked to see him the next day. When he met with the personnel director, Jackson said, he was told that the sergeant position had been given to patrolman Donald King. Czervinske then offered Jackson King's vacant patrolman position. Jackson later refused the position.

Czervinske testified that he offered Jackson the patrolman job after he had given the sergeant position to King, but not because he learned that the EEOC was looking into the case. He also testified that the decision to offer Jackson the position was made at a meeting between he

and John Perry, vice chancellor for administrative services.

UMSL police Chief James Nelson testified that Perry had waived the college education requirement for Jackson. He also said that the posted announcement of the sergeant position was in error in its description of educational requirements for the job. Nelson said that the patrolman position offered to Jackson should have been posted, but that it had not been.

Nelson testified that two years of college, "is not absolutely necessary, but I think it's very important for them to have it."

Perry testified that he thought "that requirement is an asset to an UMSL patrolman. I'm not saying that a person with the proper training couldn't effectively do the job."

Anniversary

from page one

Missouri is in the latter category.

"Our funding situation has improved somewhat in the past few months. For the fiscal year 1978-1979 we have a projected increase of \$675,000 over our present budget of \$28 million. That \$675,000 sounds like a lot of money to an individual—and it is—but it won't have an extremely great impact on UMSL because it will be distributed among many different departments. For fiscal year 1979-1980 I've proposed an additional increase of \$725,000," he said.

If Grobman had more money to work with he might be able to alleviate one minor but long-standing problem of UMSL's 15-year history—the lack of student housing.

"St. Catherine's Hall on the Marillac Campus contains 180 single-occupancy apartments once used as nun's quarters," he said. "We've already converted 60 of those rooms to office space and I'd like to convert the remaining 120 rooms to student dormitories. These rooms would house one per cent of our student population—a base we could build on."

New student housing would undoubtedly make UMSL a better place for several reasons. One of the most important of these could turn out to be the dormitories' effect on competition for high school graduates.

The post-World War II baby boom will peak in 1981. In that year the largest number of American teenagers will graduate from high school. After 1981 the number will progres-

sively decline. Competition among colleges for the dwindling number of students will probably become spirited.

Many officials of higher education, already plagued by inflation, static funding and declining enrollment, worry that the problems of the 1970's could turn into the nightmares of the 1980's.

Yet in spite of this uncertain future, Grobman has reason to believe UMSL will not suffer drastic reduction in future enrollment.

"In 1960," he said, "before UMSL and the Junior College District (JCD) were established, Washington University and St. Louis University had a combined enrollment of 20,000 students. Now in 1978, UMSL and the JCD have 40,000 students, but Washington U. and SLU still have just 20,000 students, the same number they had in 1960."

"Those figures mean UMSL is not competing with any other area university for students. Washington U. and SLU recruit students from upper-income homes and the JCD by definition concerns itself with beginning students," he said.

"We've estimated that if UMSL closed down tomorrow, Washington U. and SLU would gain only 800 students. The overwhelming majority of UMSL students probably would not go to college at all if this school didn't exist," Grobman stated.

Perhaps that last statement, more than anything else, is the accomplishment this 15-year-old university can be most proud of.

PARTY!

MAKE IT WITH **JUAQUEZ TEQUILA**

GOLD OR SILVER
IMPORTED & BOTTLED BY TEQUILA JALISCO S.A.
ST. LOUIS, MO., 80 PROOF

SIR LEW GRADE Presents
A PRODUCER CIRCLE PRODUCTION

GREGORY PECK and LAURENCE OLIVIER
JAMES MASON

A FRANKLIN J. SCHAFFNER FILM

THE BOYS FROM BRAZIL

if they survive...will we?

and starring LILLI PALMER

"THE BOYS FROM BRAZIL" Executive Producer ROBERT FRYER
Music by JERRY GOLDSMITH Screenplay by HEYWOOD GOULD
From the novel by IRA LEVIN Produced by MARTIN RICHARDS
and STANLEY O'TOOLE Directed by FRANKLIN J. SCHAFFNER

RESTRICTED
UNDER 17 REQUIRES ACCOMPANYING PARENT OR ADULT GUARDIAN

Original Soundtrack Recording Available on A&M Records and Tapes

©1978 Twentieth Century-Fox "We're Home Again" Sung by Elaine Paige

STARTS THURSDAY OCT. 5

ALTON CINE
BELTLINE & WASHINGTON

LINCOLN
BELLEVILLE, ILL.

STADIUM 1 CINE
ACROSS FROM BUSCH STADIUM

ST. ANN CINE
10441 ST. CHAS. RK. RD.

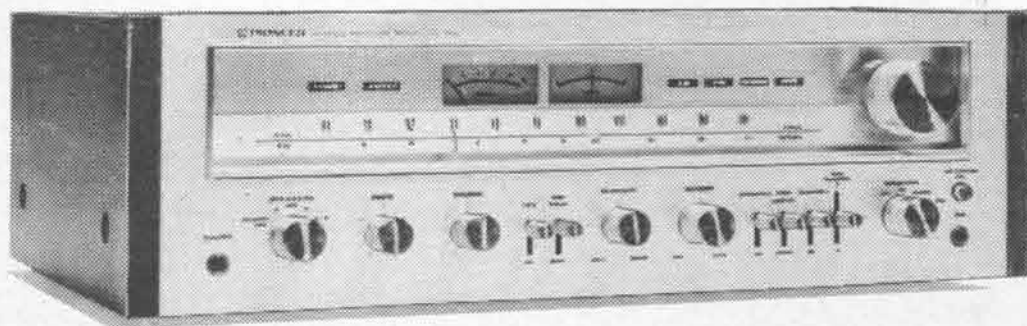
HALLS FERRY 6
1-270 & NEW HALLS FERRY

SUNSET HILLS
LINDB. & WATSON RD.

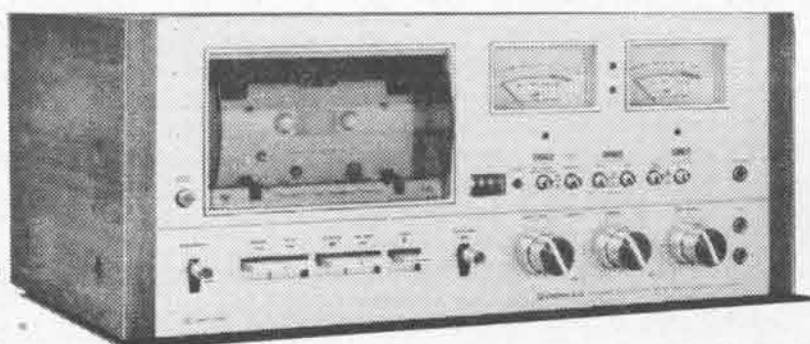
PIONEER

2-Day Super Sale!

at the Checkerdome

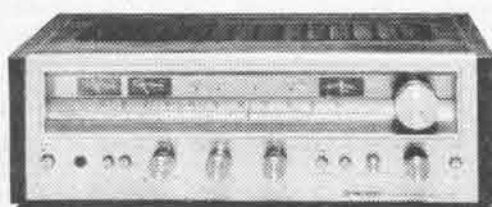


Pioneer SX-750 AM/FM stereo receiver. Packs a big 50 watts min. RMS per channel at 8 ohms, 20-20,000 Hz, 0.1% total harmonic distortion. A Pioneer favorite, the 750 is an extremely versatile control center for your system. . . at an incredibly low price! **\$217**



\$227

Pioneer CT-F9191 front-loading cassette deck with Dolby. Two motors assure smooth operation while extras like mic/line mixing, memory rewind, and solenoid controls mean added convenience. An outstanding value at this price!

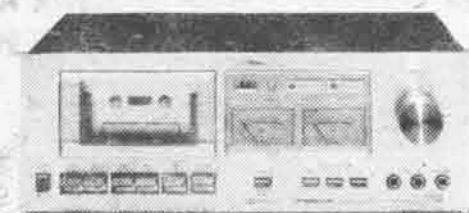


Pioneer SX-580 AM/FM stereo receiver. 20 watts min. RMS per channel at 8 ohms, 20-20,000 Hz, 0.3% total harmonic distortion. Great performance and undisputed value make this an exceptional buy! **\$157**



\$129

Pioneer PL-518 turntable with base and dust cover. A real bargain for accurate direct-drive and automatic tonearm return and shut-off.



Pioneer CT-F500 front-loading cassette deck with Dolby. Get durability and wide frequency response with Pioneer's hard permalloy record/play head. **\$127**



\$187
each

Pioneer HPM-100 4-way speaker with 12-inch woofer. Two tweeters give high range musical passages amazing clarity, depth, and dispersion.



\$77

Pioneer PL-512 turntable with base and dust cover. Quiet belt-drive design means impeccable performance for years to come!

Pioneer Project 100A 3-way speaker with 10-inch woofer. Fine Pioneer quality in a bookshelf design! A ported enclosure means rich bass response. **\$69** each

Get ready, St. Louis! You're invited to the Checkerdome for a huge 2-day Super-Sale featuring Pioneer, one of the world's largest manufacturers of high-fidelity equipment! Pacific Stereo, the nation's largest stereo specialist, is sponsoring the event. . . which means incredible savings for you on fine Pioneer components! And admission is absolutely FREE!

HUGE SELECTION, BIG SAVINGS!

If you're in the market for stereo equipment, don't buy a thing until you visit this sale event! At the Checkerdome you'll find over half a million dollars worth of Pioneer audio equipment, hourly specials on selected components, and loads of high quality accessories from other manufacturers to complement your new Pioneer purchases. In addition, Pioneer factory representatives will be present to demonstrate and answer all your questions.

CONVENIENT CREDIT

Pacific Stereo will have credit facilities available right at the Checkerdome. With your approved credit you can take that sale-priced Pioneer equipment of your dreams home with you! Visa and Mastercharge are also welcome.

FREE DISCO!

You're invited to a sizzling disco on both nights featuring performances by the Ray Parks dance troupe *plus* a disco dance contest judged by Ray Parks! It's a fun, free way to spend a Friday and Saturday night!

SHOW HOURS:

Friday, September 29th—10 a.m. to Midnight
Saturday, September 30th—10 a.m. to 10 p.m.

DISCO HOURS:

Friday—7 p.m. to Midnight
Contest—9:30 p.m. to 10 p.m.
Saturday—5 p.m. to 10 p.m.
Contest—8:30 p.m. to 9 p.m.

SAVE ON TDK TAPE!

You can get 25% off on any TDK tape when you buy a case of 10! Just present this coupon at the Checkerdome. Offer expires at 10 p.m. on Saturday, September 30, 1978.

©1978 Pacific Stereo A Unit of CBS Inc.

PACIFIC STEREO

Make your own kind of music.

features

Students explore life in Sri Lanka, Ghana

Linda Tate

Sri Lanka and Ghana are not countries most students are familiar with, but last summer, two UMSL students had the chance to visit these countries through The Experiment in International Living.

Diane Schmidt, an advanced junior, received a scholarship to Sri Lanka and Gwen Luster, a junior, won the scholarship to Ghana.

Schmidt said she chose Sri Lanka because she had done a lot of studying in Asian culture.

"I primarily wanted the experience of living somewhere totally different from the United States, somewhere on the other side of the world," she said.

Luster, who heard about the program in her African Civilization class, wanted to go to Ghana because of her interest in Africa. She hoped to witness some of the more traditional rites of the people she studied in her history class.

Schmidt, a political science

Nwomasi, which was the former head-of-state's hometown, had no electricity and no running water. All of the students who had received scholarships to Ghana stayed in the village together, working on a secondary school house. The cement was hand-mixed with shovels and added with sand to make cement-and-sand blocks.

Luster, a business-marketing major, found African families were basically more "extended" than United States families. In several middle class families she visited, there were women outside of the immediate family living with the families.

Middle class families usually had house servants also. Luster said, however, she found more extended families in the village where the children, especially the boys, helped around the house.

One difference in cultures both Schmidt and Luster noticed was that of male dominance. Schmidt said in Sri Lanka mar-

independent nations now, Schmidt and Luster found many traces of British influence in both countries. The countries are English speaking and Schmidt said Sri Lanka still has an afternoon tea time.

She said she not only saw British influences, but could "feel" them. The people of Sri Lanka are more orientated toward material wealth than they were before the British came.

Luster said the Ghana school system was British-based. Because there is not really any public school system, the students either have to pay tuition or receive a scholarship. After taking a series of exams, students start secondary school at the age of 14 and are usually ready to enter a university when they are 21.

The dress of the people in these countries has also become somewhat "westernized." While women in Sri Lanka wear saris when getting dressed up, Schmidt said a lot dress in western style and she saw a lot of miniskirts and platform shoes. In fact, she said her "father" wore a three-piece suit to work but on Sundays wore the traditional wrapped cloth and sandals to church.

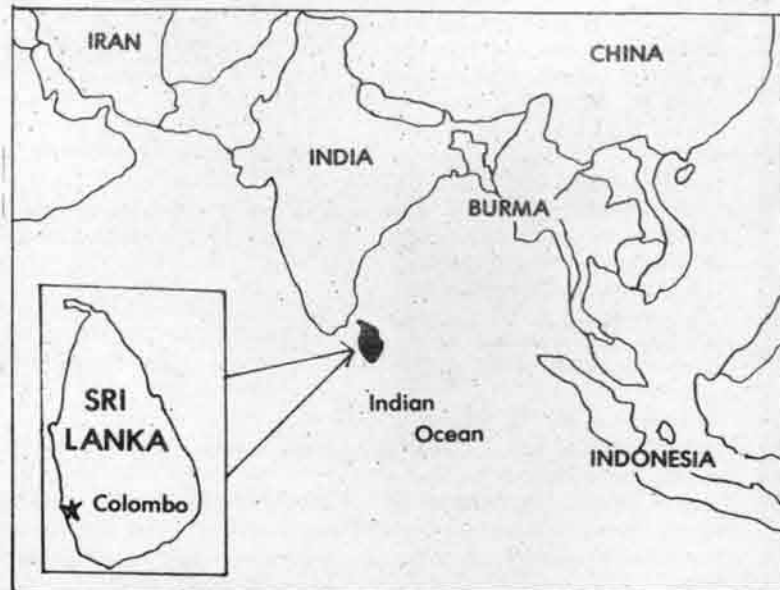
According to Luster, one can find almost any religion in Ghana, although there is still the traditional Moslem religion. Religion in Sri Lanka, however, was not heavily influenced by the British. Schmidt said while ten per cent of the people are Catholic, the rest are Buddhists.

In Ghana, the primary form of entertainment is attending funerals. Luster said Saturday is like a "funeral day." The funeral "celebration" can last anywhere from a week to two months, depending on the wealth of the family.

Schmidt noticed a major difference in the attitudes of the people. She said, "Hospitality reeks everywhere you go. They are a very friendly and extremely proud people."

She explained part of Sri Lanka's problem is the people are slow paced and not very efficient. However, they are going to be getting television soon and they already have radio.

One of the most popular radio shows, "Music USA," invited Schmidt to appear on the show three times. She sang,



SRI LANKA: Diane Schmidt stayed in Sri Lanka last summer through a scholarship program [Map by Joe Springll].

played guitar and talked about American culture.

Other unusual experiences for Schmidt included meeting the prime minister of the country, attending parliament to see him present a new constitution, and spending a day and night in a village. She also had a chance to see gem mining.

Luster's most memorable experiences happened in the village. The first night there one of the students drew everyone's attention to the stars.

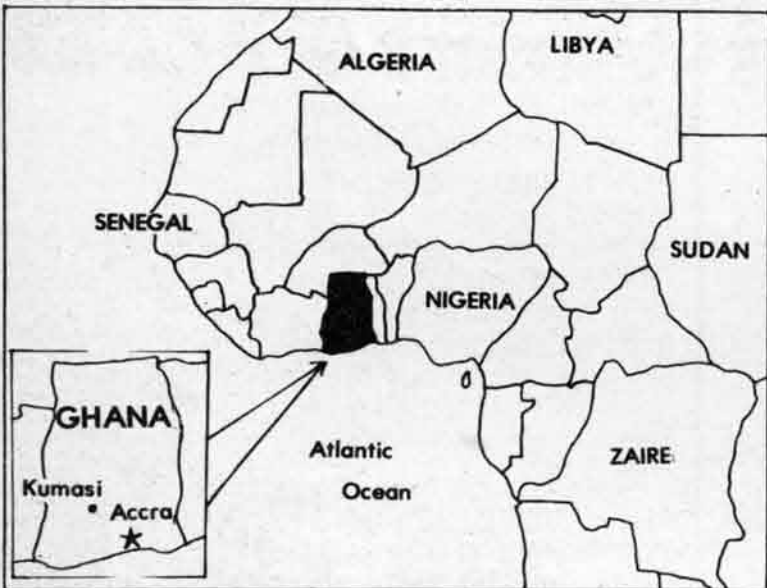
Luster said, "I had never seen so many stars. Being in a different position than at home, seeing stars so bright against a sky that was really dark and hearing the village music in the distance, was really weird."

The students in the village also got to witness the first

animal sacrifice the village had made in seven years. During the ceremony, the priest blessed each of the students, praying for their journeys home to be safe. Luster also saw the installation of the village's Queen Mother.

Schmidt feels the program was great, but that she could have learned more from a more traditional family.

Luster said, "I think the experiment is definitely one method in achieving peace. When we, the students who have gone to other countries, tell people about these countries and their cultures and other people invariably read about some of our experiences, a snowball is created which keeps adding more and more understanding of other cultures and other people."



GHANA: Gwen Luster visited Ghana last summer on a scholarship. She stayed in Kumasi and in a small village [Map by Joe Springll].

major, stayed about seven weeks in a suburb sixteen miles from Colombo, the capital city Lanka. She lived with Gertie and Lionel Fernando, a major furniture manufacturer for the island.

The Fernando's, fairly well known in Asian countries, are a middle class family and have a house over their warehouse and showroom. They are very "westernized," have three teenagers and are a close-knit group, according to Schmidt.

Luster spent eight weeks in Ghana—three weeks in a city, two weeks in a village and the rest of the time with the other international students. Her three-week "homestay" was in Kumasi, located in the eastern region of Ghana. Her "father" was an attorney and his wife a secretary for the social security agency. While living with them, she was exposed to urban life in the middle class. She also visited the hometowns of her Ghana parents who had come from small villages.

Luster said most of the people living in the cities had been raised in the villages and then migrated to the cities.

She found her stay in the village of Nwomasi allowed her to see traditional customs more than her stay in the city had.

riages are still arranged. Girls must ask their fathers and their brothers for permission to go out and women are not allowed to walk alone on the street.

Luster said due to the dominance over females, boys matured much faster in Ghana than they do here. "I had a lot of difficulty in assuming a submissive role as a woman. I found it hard not to express my opinions and to be tactful when I was talking to men," she said.

Both Sri Lanka and Ghana were once ruled by the British monarchy. Although they are

COUPON

ROME'S BEST PIZZA

Sandwiches, Salads, Beer

.....

\$1.00 off on Large pizza

.75 off on Medium pizza

.50 off on Small pizza

.....

8418 Natural Bridge
phone; 382-1024

not valid for delivery expires 10-31-78

LIMIT ONE COUPON PER PERSON

SKI COLORADO

January 3-10

Your choice of these three locations:

WINTER PARK \$142 STEAMBOAT \$134 KEYSTONE \$165

All trips include round trip, Greyhound bus service and 6 days, 5 nights in beautiful condominiums

Alternate optional purchases available at low costs

FREE BEER BUST ON BUS

For reservations and information call Floyd, 576-4634. Make reservations soon as space is limited.

Murray researches ozone

Carolyn Huston

Ozone, related to oxygen, is a natural part of the earth's atmosphere, varying in low concentration over the surface of the earth. Yet in higher concentrations which are associated with certain kinds of smog, ozone may combine with other substances to cause more rapid aging and cancer, according to Robert W. Murray, chairperson of the UMSL chemistry department.

Murray began his research in ozone chemistry in 1963, while working for Bell Laboratories. "At that time," Murray said, "the Bell System was concerned with developing jacket coverings for wires that were more resistant to the effects of the environment."

Murray came to UMSL in 1968, extending his research to include the effects of ozone on human health. According to Murray, ozone has become more of a health hazard in recent years.

"Photo-chemical smog, the type of smog found in St. Louis and other cities, is one cause of this phenomenon. Chemicals found primarily in auto exhaust react with sunlight, producing more ozone. This makes the

likelihood of ozone affecting the body greater," he said.

Aging is one process which may be affected by higher levels of ozone.

"Chemical changes in the body are accompanied by physical changes which are associated with aging. These are the result of changes in oxidation—the way the body combines oxygen with other substances. If there is more oxygen in the environment, reactions and aging occur faster," he stated.

"The body is equipped to control oxidation," Murray added, "Nature provided a defense against this process, antioxidants, or chemicals which slow oxidation and prevent it from occurring too rapidly."

With higher concentrations of ozone in the atmosphere, however, Murray feels that humans may not have enough natural antioxidants. "American nutrition may not be good enough to supply additional antioxidants from outside sources, such as vitamins C and E," he said.

Vitamin E is an especially useful antioxidant. Murray and others have performed research which indicates that Vitamin E successfully slows the rate of oxidation.

Higher levels of ozone may also be partially responsible for the higher incidence of cancer among the population, according to Murray. "Certain chemicals, such as the hydrocarbons found in cigarette smoke or automobile exhaust, may be converted into carcinogens within the body," he said.

This occurs as part of a defense mechanism—the body perceives such substances as foreign bodies and tries to get rid of them. In the liver, the body tries to make the hydrocarbon into something water-soluble, which can be eliminated. This produces carcinogens, since this water-soluble form can interact with DNA," he said. "Knowledge is still murky, but this is thought to initiate cancer," Murray added.

Cancer-causing substances can also be formed outside the body, according to Murray. Research indicates that elements of environment, ozone and substances found in hydrocarbons, can also combine to produce cancer-inducing substances. He explained, "This means that humans are even more susceptible to cancer."

"For these reasons, we should be more concerned with pollution than ever," he said.



CONCERNED: Robert W. Murray, chairman of the chemistry department, is researching the effects of ozone pollution on human health. [Photo by Romondo Davis].

SUBLIMINAL SEDUCTION

A Lecture by DR. WILSON BRYAN KEY.

How Many Ads Seduced You Today?



Wednesday, October 18, 1978 11:45 am.
J.C. PENNEY AUDITORIUM.

NO ADMISSION CHARGE

PRESENTED BY THE UNIVERSITY PROGRAM BOARD

FINANCED WITH STUDENT ACTIVITY FUNDS

classified ad' (klas' ə fied' ad), noun 1. a brief advertisement, as in newspaper or magazine, typically one column wide, that offers or requests jobs, messages, items for sale, etc. Also called CURRENT CLASSIFIEDS, as in free to UMSL students, and \$2.50 to others, (come to 8 Blue Metal Building).

class less (klas lis), adj. 1. wearing sneakers when you are the best man.

UMSL building names reflect history

Mary Bagley

On looking back on UMSL's 15-year history and progression though the years, it is quite clear UMSL has come a long way since its charter and dedication of its' first building, Benton Hall.

The names of the buildings reflect an era long past of hard working, famous Missourians and those who were dedicated to forming and molding UMSL into what it is today.

Jean Baptiste Charles Lucas, for whom Lucas Hall is named, owned the land on which UMSL is situated. Due to a conflict of land deeds, Lucas, then a federal judge, became politically active and an opponent of Thomas Benton, a Missouri senator for whom Benton Hall was named.

Lucas favored the Spanish land deeds as valid and Benton

claimed the French deeds to be valid.

This involvement led to two duels between Benton and Lucas' son, Charles. Charles, at the time owned the UMSL land and at his death, the land reverted to his father.

In the first duel, Benton was struck in the leg and Lucas in the neck. Since no one was killed, another duel was scheduled and Benton killed Lucas.

Many names, including Thomas Jefferson, had been suggested for UMSL's library. At the time, a Current editorial proposed to disqualify Jefferson because he owned slaves and did not want the entire Louisiana Territory to be purchased. Since Napoleon Bonaparte sold it as free territory, his name was also suggested for the library.

Clark Hall was named after William Clark, of the Lewis and Clark expedition fame and form-

er governor of Missouri.

According to Irene Cortinovic, UMSL archivist director, who has submitted names for the renaming of many of UMSL's buildings, Merriweather Lewis is being considered for the name of one of the remaining buildings.

"Clark had a big family who pushed his name. Lewis, who is just as important to the expedition, committed suicide and had no wife or children. He has never received the attention he should," said Cortinovic.

Stadler Hall was named for Lewis John Stadler, a scientist. Stadler, a St. Louisan, taught genetics at the University of Missouri-Columbia.

John Cash Penney, a native Missouri businessman, gave UMSL a warehouse. Due to the rent the Edison Brothers Store pays, UMSL was able to build the J.C. Penney Building.

Howard B. Woods is the only

curator for whom UMSL has named a building. A St. Louisan, Woods was active in the black community. He was also editor of the "St. Louis Argus" and founded the St. Louis American newspaper.

Mark Twain, namesake of the multipurpose building, was considered appropriate because several athletic teams are named the Rivermen or Riverwomen and Twain's name is connected with the river.

"The general plan has been to name all the buildings after historically important people," said Cortinovic. "There is a university rule which states a building cannot be named after a living person, but this rule has been avoided on the Columbia campus. Warren E. Hearnes Hall and Eleanor Ellis Library are a few examples."

"Ward E. Barnes, one of the proposed names for the build-

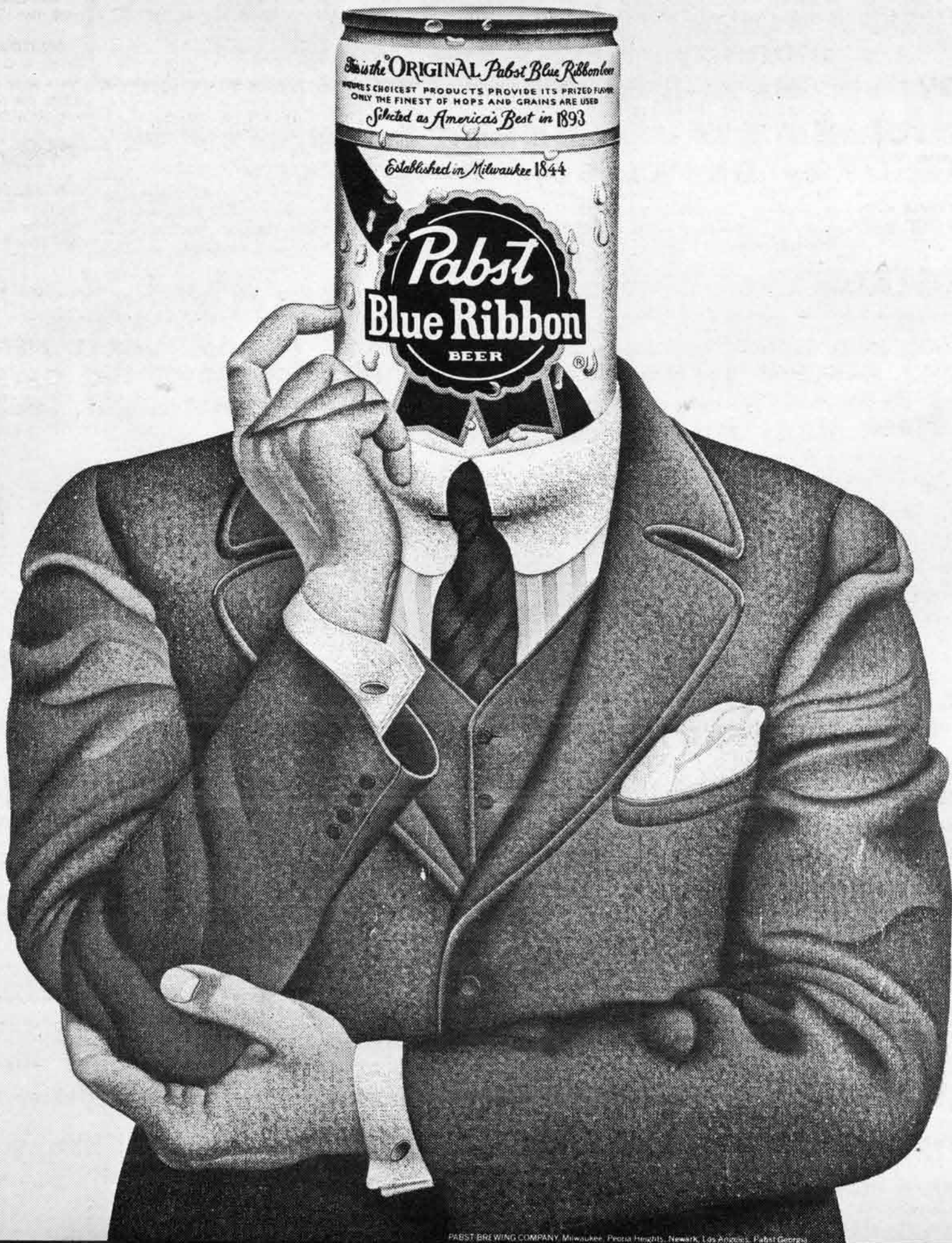
ing, is still living. He is responsible for having UMSL placed in Normandy and would be an excellent person to have a building dedicated to him due to all that he has done for UMSL," she added.

The buildings to be renamed are SSB, the Tower and education buildings at Marillac. A few of the proposed names include Anne Lucas Hunt, Pierre Laclede, Charles Lindbergh and Susan Blow.

Anne Lucas Hunt, Jean Lucas' daughter, owned the land Marillac is on. It has been proposed the Marillac campus be renamed the Hunt Campus and the main campus be called Lucas Campus, which means UMSL would have Lucas and Hunt Campuses.

"Another proposal," said Cortinovic, "is for the campuses to be renamed the North and South Campuses."

"I've got Pabst Blue Ribbon on my mind."



around umsl

sept. 28 - oct. 5

Kathy Potthoff

thursday

MEETING: Annual Business Alumni will meet and have dinner at 6 pm in the University House.

friday

COLLOQUIUM: The Faculty Affairs Committee will meet at noon in the northwest room of Marillac cafeteria.

MEETING: The Accounting Club will have speaker Gary Mitchell on "Comparison of Big vs. Local CPA Firms" at 12:30 pm in room 222 J.C. Penney.

FILM: "MacArthur" will be shown in room 200 Lucas Hall at 8 pm for \$1 with UMSL ID.

MUSIC: The KWMU Student Staff will sponsor music on the Hill at Bugg Lake from 11-1.

VOLLEYBALL: Kansas City Invitational. Time to be announced.

saturday

REUNION: UMSL Class of '68 ten year reunion will be at 6:30 pm in the Sheraton West Port Inn.

SOCCER: Game at UMSL with Xavier University at 1:30 pm here.

FIELD HOCKEY: Eastern Illinois will play UMSL at 1 pm here.

CROSS COUNTRY: All Missouri meet Columbia at 11 am.

VOLLEYBALL: Kansas City Invitational. Time to be announced.

sunday

SOCCER: SIU will play UMSL at 1:30 pm.

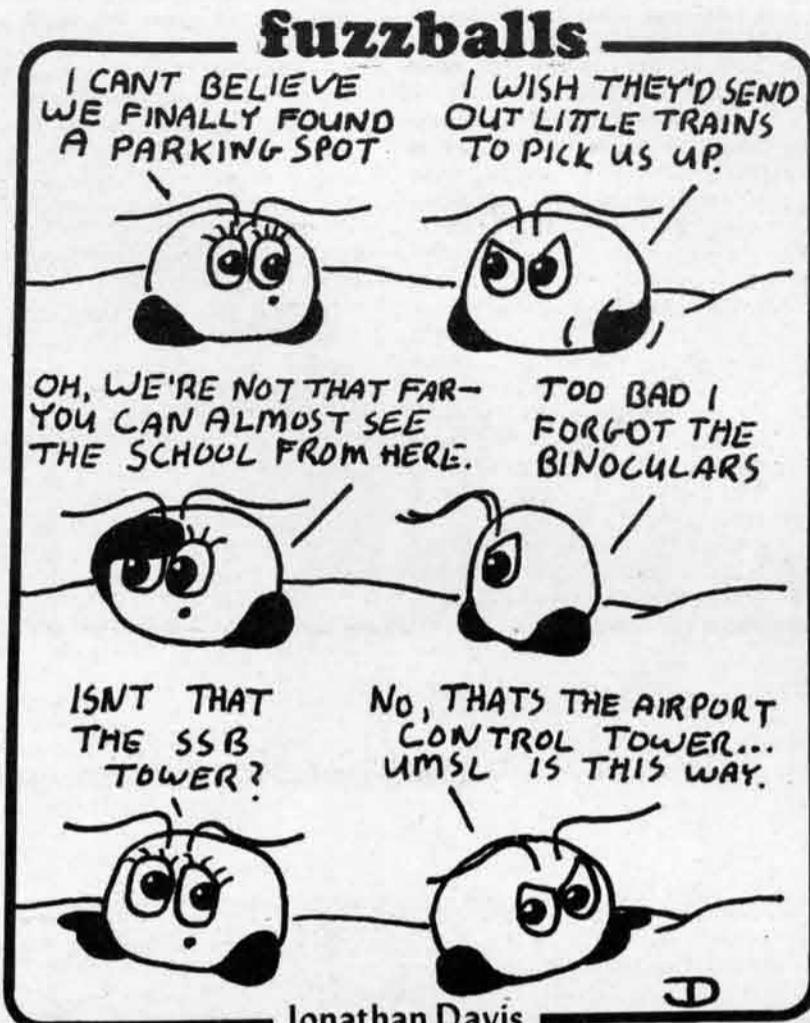
FIELD HOCKEY: Southeast will play UMSL at 10:30 am here.

RADIO PROGRAM: Tune in to Creative Aging, a 60 minute program for retirees and retirees to be at 5 pm on 91 FM. This week will feature Mr. Henry J. Townsend, a leading performer of St. Louis blues style music, Mr. and Mrs. Elmer Goebel, who recently celebrated their 55th anniversary and guests from the Cardinal Ritter Institute. Sister Donna Loretta Gunn announces "Chautauqua 1978," a week to honor senior citizens.

monday

GALLERY 210: "Generative Systems: Art & Technology" will be open from 9 am - 9 pm in room 210 Lucas Hall.

FILM: "Grand Hotel" starring Greta Garbo and John Barrymore will be shown at 8:15 pm in the J.C. Penney auditorium. Free admission.



tuesday

MATURE STUDENTS: A drop-in discussion and support group for women over '25 will meet at 1:40 pm in the Women's Center, 107A Benton Hall.

KOFFEE KLATCH: The Evening College is sponsoring a koffee klatch from 5:30 pm - 8:30 pm in the Lucas Hall lobby.

GALLERY 210: "Generative Systems: Art & Technology" will be shown in room 210 Lucas Hall from 9 am - 9 pm.

MEETING: Chancellor's Campus Assembly will meet at 3:15 pm in 222 J.C. Penney.

FILM: "Captain Blood" starring Errol Flynn will be shown at 8:15 pm in the J.C. Penney auditorium. Free admission.

KOFFEE KLATCH: The Evening College is sponsoring a koffee klatch from 5:30 pm - 8:30 pm in the Lucas Hall lobby.

wednesday

GALLERY 210: "Generative Systems: Art & Technology" will be shown in room 210 Lucas Hall from 9 am - 9 pm.

LECTURE: Christian Students for Intellectual Alternatives will have R. Laird Harris speaking on "Old Testament History vs. illuminated by archaeological studies."

DISCO: Dance with Streiker in the Fun Palace from 11 am - 3 pm.

SOCCER: McKendree College will play UMSL at 4:15 pm here.

MATURE STUDENTS: A drop in discussion and support group for women over 25 will meet at 12:40 pm in the Women's Center, 107A Benton Hall.

thursday

GALLERY 210: "Generative systems: Art & Technology" will be shown in room 210 Lucas Hall from 9 am - 9 pm.

COLLEGIALITY



LeLoup & Hutchison

classifieds

WANTED: CAD student assistant needed for CAD reading lab. Reading courses helpful. paid position. Call (453-5410).

HELP WANTED: Part-time job. Counseling parents of the handicapped. Some experience in special education required. Start immediately. Call 878-7337.

WANTED: Writer for handicapped student to take class notes, assist with lab assignments and record test answers. Would prefer someone with Statistics 120 background. Pay based on hourly rate. Call Donna at 524-6583.

HELP WANTED: Part-time job counseling parents of the

Handicapped. Some experience in special education required. Start immediately. Call 878-7337.

VAIL SKI TRIP: Pi Kappa Alpha Fraternity is sponsoring a ski trip to Vail Colorado — \$155 Call Bob 867-8182 or Dan 878-9286 for more information.

SKI COLORADO: Jan. 3-10. Steamboat \$134, Winter Park \$142, Keystone \$165. All trips include roundtrip greyhound bus service and accommodations in beautiful condominiums. Optional packages available at low rates. Free beer bust on bus. For information and reservations call Floyd at 576-4634. Places are limited, so please make reservations soon.

HELP WANTED: Student assistant needed for CAD reading lab. Reading courses helpful. Paid position. Call (453-5410).

Do you want to "Give a Day for ERA?" Call the Missouri ERA Coalition Office in St. Louis, 647-3430, to volunteer to interview registered voters who have said that they favor ratification of the ERA. Help these people convince their State Senators to change their votes from "no" to "yes."

Personal Growth psychotherapy group now forming. Individual psychotherapy also available. Gerald M. Tullman, clinical psychologist. Overland Medical Center, 427-2424, extension 218-284.

NEW STUDENT RECORD: The New Student Record will be available for pickup in the U. Center Lobby, Friday, Sept. 29 at 9:30 am - 12 pm.

ROOMMATE WANTED: Female to share room with same. Florissant, kitchen and laundry privileges. \$130 rent and utilities References 831-7473.

Think you can coach better than Bowman, Cherry, Plager, Pulford, Wilson, Kelly, Nanne, Neale, Shero, Arbour, Creighton, McCammon, Berry, Kromm, McVie, Neilson and Pronovost? Well, here's your chance to prove it. Manage a team in the UMSL Tablegamers Hockey League. Just leave your name at the info. desk, along with your phone number

by October 6. It's fun. It's easy.

HELP WANTED: Part-time employment. Shipping department seeking permanent part-time employees. Ideal for students who want full-time work during school breaks. Hours 5-9 pm but can be flexible. Call 771-5765. EOEMF.

DONATE PLASMA twice weekly help others while helping yourself
bring in coupon and receive \$12 on your first donation
Alpha Therapeutics Co.
1024 Washington
St. Louis, Mo. 63101

fine arts



INTRODUCING...Charles Daellenbach prefaces the Canadian Brass' rendition of Bach's "Tocatta and Fugue in D Minor" with a few humorous remarks. The quintet appeared

in the J.C. Penney auditorium last Saturday [Photo by Daniel C. Flanakin.]

Brass presents spectacular performance

Daniel C. Flanakin

The Canadian Brass Quintet, appearing in concert Saturday, September 23, gave a fine performance to a variety of music. Particularly enjoyable was the group's ability to involve the audience in the concert; even if only by laughter.

The members of the quintet, who are trumpeters Frederic Mills and Ronald Romm, french horn player Graeme Page, trombonist Eugene Watts and tubist Charles Daellenbach, all occupy first chairs in the Hamilton Philharmonic Orchestra. They enjoy a well-deserved reputation for taking the "starch" out of long-haired music.

If the Canadian Brass Quintet was a traditional chamber ensemble, they would have walked on to the J.C. Penney auditorium stage, sat down in a stiff semi-circle, and played the printed music in a very formal manner.

But the group tore this tradition apart at the seams, by filling in the spaces between their dazzling display of musicianship with some light comedy and a lot of absolute nonsense.

The performance was cleverly planned and perfectly timed.

After the ensemble started the evening with Samuel Scheidt's "Galliard Battaglia," Graeme Page stepped forward to

introduce the next composition, Handel's Suite from "Water Music."

After giving a brief history of the piece, Page explained to the audience that since Handel did not write for trombone, trombonist Watts would actually be playing the second french horn part. He went on to say that the trombone had been invented 700 years ago and had never been improved.

Obviously, Watts did not take this too kindly. He did not have much recourse, however, as Page and the rest seemed to pick on him all night.

Aside from crowding him out during solos and verbally abusing him, the group forced him, at one time, to play while standing on a chair.

No one was spared, however, in the good-natured aspersions which the group cast on each other throughout the evening.

Handel's piece, which was arranged by trumpeter Mills, was performed very nicely. The question and answer section in the first movement was played particularly well by Mills and Romm. Their similarity of tonal quality and phrasing was breath-taking.

The melodic line for the french horn and trombone in the second movement was very well balanced, but unfortunately, the two players were out of tune.

This was one of the few times during the performance that the group was not precisely on pitch.

Aside from some problems with erratic attacks and the airiness of Romm's piccolo trumpet, the piece sounded almost as if it were being played by the full orchestra that it was written for.

In introducing the next piece, Henry Purcell's "Sonata for Two Trumpets," Watts explained that both Mills and Romm were "capable of playing the solo line in this piece, but with both of them playing, we get done twice as fast."

The composition, which was also arranged by Mills, was highlighted by the third and last movement, Presto. Mills and Romm threw the solo lines back and forth so comfortably that it seemed like they were tossing a ball around.

Immediately following the conclusion of the "Sonata," the group left the stage and paraded to various parts of the auditorium to perform "Canzona Prima A Cinque." The antiphonal sound, which composer Giovanni Gabrielli suggested in his original score, created a fantastic effect. With the trumpets in the back, the trombone and horn in the front, and the tuba on stage, the big full sound was like that which one only expects from a brass ensemble.

Bach's "Tocatta and Fugue in D Minor" is an extremely difficult piece which was originally written for the organ. The group's musicianship and showmanship during this piece was surpassed only by their splendid work on Bach's "Little Fugue in G Minor," which was performed later in the concert.

Following the typical Bach ending, the group launched into perhaps the most exciting piece of the evening. Although Morley Calvert's "Suite from the Monteregian Hills" is virtually unknown, it is so full of imagery that one cannot help but enjoy it.

The Royal Canadian Army marching into battle in the first movement, a man crying over the irreversible loss of a woman in the second movement, the practical joker in the third, and finally, the danding in the street at a small village celebration, can all be heard and felt without any stretch of the imagination.

After a rather long intermission, the group performed a tune which was commissioned specifically for the Canadian Brass Quintet. Daellenbach gave a brief history of the piece. In the middle of his presentation, all the lights were turned out so that the stage could be set.

[See, "Brass", page 15]

Quintet boasts experience

Although the Canadian Brass have been dubbed "The Marx Brothers of Music," their musical ability supercedes their comical antics by far. The individual talent of the members is outstanding. But, considering their collective backgrounds, this ability is not too surprising.

Born in Guelph, Ontario, Frederic Mills studied at the Julliard School of Music. He was Principal Trumpet under Leopold Stokowski in both the Houston Symphony and the American Symphony Orchestras.

In Canada, his career has been equally distinguished: First Trumpet in the Stratford Festival Orchestra and the National Arts Centre Orchestra for three seasons and most recently in the Hamilton Philharmonic. Mills combines a heavy performance schedule with arranging and transcribing music for the Canadian Brass.

Ronald Romm received B.M. and M.S. degrees from the Julliard School of Music. He was a founding member of the Los Angeles Brass Quintet and the New York Brass Society. He has performed with Los Angeles Philharmonic, the New

York Philharmonic, the New York City Opera, the Radio Music Hall Orchestra and the Hamilton Philharmonic. Romm is sought after as one of the finest soloists in Canada today.

Graeme Page, a graduate of the University of Toronto, has been Principal Horn in the National Ballet Orchestra, the Banff Festival Orchestra and the Hamilton Philharmonic. He has performed with the Toronto Symphony and CBC Festival Orchestra. With a degree in commerce, Page handles the business of the Canadian Brass.

After graduating from the New England Conservatory, Eugene Watts played in the Tanglewood Festival Orchestra, North Carolina Symphony, San Antonio Symphony and Milwaukee Symphony.

Well known as a soloist, Watts has performed at the Stratford and Shaw Festivals, and has recorded for the CBC. He is responsible for much of the programming for the quintet.

Charles Daellenbach, with a PhD from the Eastman School of Music, has [See, "Quintet", page 15]



WALL OF CHINA: The Canadian Brass recently toured the People's Republic of China. The Party newspaper gave them rave reviews. [Photo courtesy of Program Board].

U. Players announce cast, dates for "Gypsy"

The UMSL University Players recently announced the cast of "Gypsy," a musical that played on Broadway for 22 months is based on the memoirs of Gypsy Rose Lee. The libretto was written by Arthur Laurents, lyrics by Stephen Sondheim with music by Jules Styne.

Margot Cavanaugh will be starred in the role of the formidable and overpowering mother who propels her two daughters to stardom. The role of the gawky adolescent who emerges into statuesque beauty and fame will be played by Debi Brown. Cindy Kuhn will be seen as the sister who was the breadwinner of the family as a child star. The two sisters, as children, will be played by

Peggy Quinn as Baby June and Andrea Mitauer as Baby Louise.

Additional cast members will include Melanie Alper, Joel Bennett, Martha Casey, Tim Conroy, Suzanne Drebes, Jeff Gelber, Richard Green, Michael Heimes, Sue Hogan, Steph Hook, Mary Jewell, Eric Johnson, David Koehr, Greg Kingerman, Jeff Lewis, Jerry Leyschock, Maureen Miller, Russ Monika, Patricia Norman, Karyn Pauli, Allen Proemsay, Diane Schmidt, Sanjay Shastri, Ray Shea and Ian Tobias.

The Talent Show children will be Lisa Barnett, Kimberly Coffman, Molly Connaghan, Kimberly Conry, Steve Cox, Kris Evans, Rhonda Levy, Ellen Maxwell, Shannon McKinnon, Laura Pauli Susan Rollins, Jennifer Schober,

Rhonda Tess, Eric Williamis, Jan Willman and Tony Zerbollo.

The opening review by Walter Kerr of the New York Herald Tribune said, "I'm not sure whether 'Gypsy' is new-fashioned or old-fashioned, integrated or non-integrated. The only thing I'm sure of is that it's the best damn musical I've seen in years."

"Gypsy" is being directed by Denny Bettisworth with Mary Jewell as Assistant Director. Jim Fay, UMSL faculty member, is the designer and technical director. Warren Bellis is the music director and Michael Thomas is the choreographer.

The musical comedy will be presented at the Benton Hall Theatre on October 26-29 at 8pm.

Watch out for Wet Paint in University Center lounge

UMSL's improvisational comedy group, under different names and different direction, has been a part of the University Players for over four years. During that time, it has been known as Jongleurs, 13th Floor and now, Wet Paint.

The last time they performed on campus was April 1976.

That particular show featured, among other things, several unusual Bicentennial Minutes and the escapades of Patty Hearstman, Patty Hearstman.

The group has undergone an

almost total face lift since then, with only Ray Shea left from that show. The team was reformed this summer to appear at Camelot Collage at Laclede's Landing in late August.

Wet Paint will perform again on September 29, at 7:30pm in the U. Center lounge. The show is free to UMSL students and their guests.

Included in the show will be a visit with Cardinal Carberry, an inside look at a very strange murder trial, the introduction of a new kind of credit card and a

look at what really goes on in those department store mirrors.

The members of the group, all students or former students, are Chris Belsky, Bob Blase, Debi Brown, Sue Hogan, Mary Jewel, Cindy Kryder, Gary Kryder, Mike Oestereich, Ray Shea and Dennis Sullivan.

After the regular portion of the show, the audience will have a chance to participate by suggesting places, characters and situations for the group to use to improvise scenes right on the spot.



LOST: Melanie Mayron plays Susan Weinblatt in Claudia Weill's new film, "Girl Friends". [Photo courtesy of Warner Brothers].

"Girl Friends" gives sensitive portrayal

Kathy Nelson

A very appropriate gift for both Claudia Weill and Melanie Mayron on the advent of "Girl Friends," their first major motion picture, would be a single rosebud.

This tender portrait of a young woman's search for companionship shows the directing potential of Claudia Weill as well as the acting talents of Melanie Mayron.

The theme is not new or exciting—the adjustment after loss—but the plot is thick enough to hold attention. "Girl Friends" is the story of Susan Weinblatt (Mayron) searching for her place after her roommate and best friend Annie (Anita Skinner) marries. After a one night fling with an acquaintance named Eric (Christopher Guest), she tries to fill the gap with an assortment of surrogates—a new lesbian roommate, a near-affair with her rabbi (Eli Wallach), an

all-out attempt at launching her photography career and occasional visits to Annie; all of them leaving her lonely, empty and scared. But her persistent spirit eventually triumphs and she gets her breaks - her one exhibit, a lasting relationship with Eric and a reconciliation with Annie.

Mayron's portrayal of Susan's emptiness, frustration and ability to persist is compelling and compassionate. She gets only sporadic help, however, from Wallach and Skinner, a graduate of Webster College. When they do combine, though, they create powerful visual and emotional images that flow with the plot.

The film editing, however, seemed to interrupt this flow. Transitions are nonexistent. The majority of scenes are the same length, making the film seem both predictable and much longer than the 90 minutes it runs.

[See, "Girl Friends", page 14]



SKI

WITH PI KAPPA ALPHA
\$155
JANUARY 8-13

Vail is the Best!
 Big, exciting, and beautiful. Vail is North America's largest single mountain ski resort offering 10 square miles of ski terrain, 3 deep powder bowls, and many miles of carefully groomed slopes for skiers of every ability. Vail has over 70 restaurants and lounges, 40 shops and boutiques, 20 ski shops, 150 certified ski instructors, and 4 on-mountain restaurants.

6 Days/5 Nights - Condominiums in Vail Village
 Your stay includes 6 days/5 nights at a luxurious condominium in Vail Village within easy walking distance to the lifts, restaurants, shops and nightlife. All units are individually owned and beautifully decorated. Every unit also has a full kitchen to help save on meals.

3-Day Lift Pass
 A 3-day lift pass good on all of Vail's 19 lifts is included. Additional lift passes are available for \$11.00 per day (normally \$15.00 per day).


3-Days Ski Rental
 3-days ski rental is included. GLM (Graduated Length Method) skis are provided for beginners which makes learning easy. Additional ski rental is \$6.00 per day (normally \$8.00 per day).

Transportation
 Vail is located 100 miles west of Denver on all-weather Interstate 70. We will assist in arranging car pools for those interested. Charter bus transportation is available for \$55.00 per person.

call:
BOB HENSLEE 10532 Count Dr. St. Louis, Mo. 63136 867-8182
DAN SWANGER 12736 Whispering Hills St. Louis, Mo. 63141 878-9286


*Only \$145.00 in Vail Village Hotels





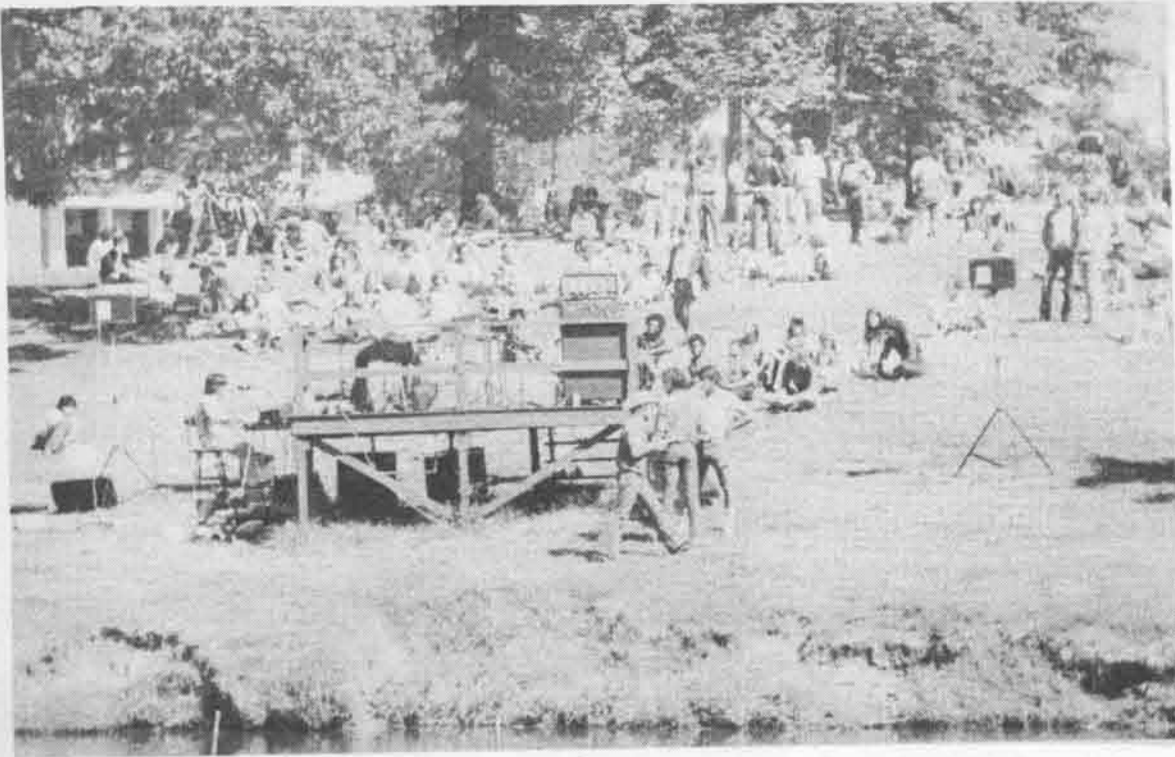
Personalized Decorations Quickly!

Baskin-Robbins can personalize a cake for you in minutes. That's good to know when you're on your way to the party... without the party cake.



BASKIN-ROBBINS ICE CREAM STORES

383-5364
 7287 Natural Bridge at Florissant Hours: 11:00 a.m. to 10:00 p.m.



DIG THAT JAZZ: UMSL students enjoy the live music of Maga from the hillside by Bugg Lake [Photo by Rick Jackaway.]

Talent show planned

Daniel C. Flanakin

UMSL students with musical talent are invited to perform on October 9, in the University Center lounge. There will be no competition and no prizes, just a chance to have some fun and share your enjoyment with others.

This musical talent "Showcase" is being sponsored by the Student Activities office. A definite time for the show will not be set until that office has determined how many participants will be involved. An approximate time, however, is

set at 11am.

The sign-up deadline is Oct. 6, at noon, in the Student Activities office, which is located in room 262 U: Center.

Groups of individuals are also welcome to participate. According to Rick Blanton, director of student activities, "We have not put up any restrictions because we don't really know what to expect." He also said, "Depending on the number of participants, there may be a time limit, but we're not sure yet."

Blanton has been considering

this idea for quite awhile. He finally decided to try it after holding conversations with various students who also expressed interest in this type of a program.

Blanton is having the piano tuned and is renting a sound system from the University Center office.

When asked about the possibility of this being a pilot for similar shows in the future, Blanton answered, "If this goes over well, sure, we'll do it again. We might try pantomime or poetry readings in addition to music."

KWMU airs Symphony

Daniel C. Flanakin

KWMU will continue to air their series of St. Louis Symphony concerts this fall. The Wednesday evening broadcasts are made possible, in part, by the Missouri Arts Council.

The concerts, most of which were recorded last season, will begin Wednesday, October 4 at 5pm. The program will feature four members of the orchestra as soloists: Takaoki Sugitani, violin; Barbara Herr, oboe; Robert Mottl, bassoon; and Yuan Tung, cello.

The program will feature Wagner's Overture to "Tannhauser." Haydn's Sinfonia Concertante in B flat Major for

Violin, Oboe, Bassoon, Cello, and Orchestra; Opus 84, Robert Schumann's Symphony No. 1 in B flat Major; Opus 38, subtitled "Spring"; Penderesky's "Jacob's Dream" and Prokofiev's Scythian Suite, Opus 20.

Jerzy Semkow will conduct the program.

Regular scheduling continues on Oct. 11, at 8pm. The program will feature Haydn's "Creation" Oratorio. Along with Semkow conducting the orchestra and Thomas Peck conducting the St. Louis Symphony Chorus, the vocal soloists will be soprano Benita Valente, tenor Ryland Davies and bass Gary Kendall.

The Oct. 18 program which

will be aired at 8pm, will feature conductor Leonard Slatkin and flutist Jacob Berg. Scheduled selections are Schedrin's "Carmen Ballet Suite," Schubert's Symphony No. 2 in B flat Major, Kennan's "Night Soliloquy" and the incomparable Bartok Concerto for Orchestra.

The Oct. 25 broadcast will include Thomson's Symphony No. 3 in B flat Major, Mozart's Concerto No. 3 in G Major & Tchaikovsky's Symphony No. 5 in E minor, Opus 64.

On this program, the Syphony will feature two guests: conductor Kazuyoshi Akiyama and solo violinist Henryk Szeryng. This broadcast will also be at 8pm.

Hayman opens Pops season at Powell

Conductor Richard Hayman and the Saint Louis Symphony Orchestra open the 1978-79 Pops at Powell season with "Another Openin' — Another Pops!" at 8:30pm, September 29 and at 3pm, October 1, in Powell Symphony Hall, 718 North Grand Blvd.

Highlights from the program include a salute to the Jewish holidays with selections from "Fiddler on the Roof," theme from "Exodus," and "Hava Nagila." The Orchestra also will perform such favorites from "The Fantasticks" as "They Were You," "Soon It's Gonna Rain" and "Try to Remember." ber."

The program continues with Nancini Magic and such tunes as "Dear Heart," "Moon River" and "Charade." The con-

certs will conclude with A Musical Salute to Saint Louis featuring "Saint Louis Blues," "Missouri Waltz" and "Meet Me in Saint Louis, Louis."

The 1978 summer season was Mr. Hayman's fourth year as principal conductor of the Saint Louis County Pops. He has been principal conductor of the Detroit Symphony Orchestra's Pops concert series since 1970. Last fall, Mr. Hayman appeared as guest conductor with the symphony orchestras of Milwaukee, Phoenix, Vancouver, Buffalo and Baltimore.

Tickets for these performances are available through the Powell Symphony Hall box office or at any single ticket outlet. For further information, phone 534-1700.



AND A ONE: Jerzy Semkow conducts the St. Louis Symphony. [Photo courtesy of St. Louis Symphony].

"Girl Friends"

from page 13

Producer - director - cowriter Claudia Weill has laid impressive groundwork for the movie, showing the same talents that won her many awards for documentaries. She seldom allows either plot or acting to become saccharin, stereotyped or melodramatic. Sets and costumes reflect Jewish heritage rather than a 70's-type look, giving a timeless quality to the movie.

Weill obviously didn't plan to make much money, but perhaps she became too specialized in her audience selection. The movie will touch young people in the middle of the losing-searching-finding cycle, but others will be annoyed, even bored with the everyday nature of Susan's problems.

The combination of Weill plus Mayron equals sensitivity, a fragility which occasionally borders on brittleness. But they

quickly recombine, refine their metal, and produce for themselves a delicate silver cup.

"Girl Friends" won't break any box office records, but it will insure another leading role for Melanie Mayron and another grant from the American Film Institute for Claudia Weill. Hopefully, neither has peaked with this effort.



Pioneer SX980 Receiver \$364
Technics SL3300 Turntable \$120
Akai CS7020 Cassette \$125
Our Free Catalog has many more deals on major brands... even lower prices on our monthly specials sheet. Send now and find out how to buy current \$7.98 list 'p's for \$3.69 Stereo Clearance House Dept ED72 1029 Jacoby St. Johnstown, Pa. 15902. Phone Quites 814-536-1611

The CURRENT
needs writers,
artists...



**MULTI-MILLION \$
COMPANY
EXPANDING
INTO LOCAL AREA**

**Full/Part time positions
In Sales and Management
Available
EARN
\$1,200-1,800 a month**

fringe benefits and rapid advances
291-7138

Between 9am-1pm Monday only

COACHES WANTED

for
**UMSL
TABLEGAMERS**

HOCKEY

SEASON!

**If You Want a chance
to Manage real NHL STARS:**

Leave Name &
Phone Number
at **INFO DESK**

Deadline: Oct. 6

MacArthur returns

Debbie Tannenbaum

UMSL's weekend movie this Friday night is "MacArthur." This movie is much more like an official biography than an action-packed war film.

"MacArthur" is a series of flashbacks set in the frame of his 1962 farewell address to the students at West Point. The actual time covered is from MacArthur's departure from Corregidor in 1962, just before

his stay in Australia and his return to the Philippines, through his term of supreme commander in Japan and his ultimate fall-out with President Harry Truman over policies in the Korean War.

In the title role, Gregory Peck is very good. He looks and sounds like the general and makes the character appealing. Peck himself has a kind of lofty manner-even when he's being humble - that well suits Mac

Arthur.

The focus is clearly on MacArthur from beginning to end. Events and personalities are shown only in their relationship to him. Because of this, the movie sometimes covers too much material too quickly, sometimes too artificially. Unless a movie-goer remembers his history, he's going to feel lost.

"MacArthur" will be shown at 8pm in room 200 Lucas Hall for \$1 with an UMSL ID.

Brass

from page 12

At this point Daellenbach remarked to the audience, "Boy it sure is dark in here - can you still hear me?"

"Taking a Stand," which was written by the dean of Toronto University, John Beckwith, is a very contemporary piece with atonality and disjoint attacks. Although the players wander throughout the auditorium in a mock quest for some unattainable goal, the piece itself does not move in any direction at all.

It did, however, give the audience a pretty good feel for the turmoil that the dean of a college was probably going through when the piece written in the early seventies.

Scott Joplin's "The Favorite Rag," Larry Crosley's "Days before Yesterday" and Fats Waller's "Black and Blue" were all performed with rhythmic candor and an uncommon sensitivity for phrasing and balance. The Waller tune, from Tony Award winning Broadway show, "Ain't Misbehavin'," is on the new RCA that the Brass will release within a few weeks.

The quintet closed its regularly scheduled program with the previously mentioned "Fugue in G Minor" by Johann Sebastian Bach, subtitled "Little." Daellenbach introduced the composition by saying that he thought it was called the "Little" fugue because Bach was a short person.

The performance of this piece was outstanding. As one after another of the instruments came in with the fugal melody, the previous instruments continued playing a series of counter melodies.

The group's rendition of the almost cliché Bach stylism inspired the audience to bring back the Brass for another tune.

The group's encore was "A Closer Walk With Thee," an old Dixieland standard. The feeling of New Orleans was present not only in the musicians' performance, but also in the audience's enjoyment.

When asked about the group's "Marx Brothers of Brass" tag, Daellenbach replied, "We don't really like it. I think it stems from the fact that we do not take ourselves seriously, even though we are very serious about the music that we play."

The group's incredible talent and well-timed comedy was not wasted on the crowd. An easy-going program of serious music turned out to be one dynamic evening for the appreciative music lovers in attendance.



GET DOWN: Guitarist Tim Reynolds from Maga seems to be enjoying himself at the concert last Friday [Photo by Romondo Davis.]

Quintet

from page 12

performed with the Rochester Philharmonic, the Rochester Brass Quintet and the National Arts Centre Orchestra. He is currently a member of the

faculty at the University of Toronto. In addition to his many live performances as a soloist or as a member of the Canadian Brass he appears frequently on Canadian radio and television.



Express yourself
with a letter
to the editor



Central Council is looking for volunteers

Six students needed for U. Center Board

THE UNIVERSITY CENTER ADVISORY BOARD advised the director of the University Center serves the university campus as its community center by providing services and com. It is not strictly a student union since faculty, staff and alumni are welcome. The sharing through discussion is one of the oldest traditions of such centers. Your informal education be enhanced by the diverse points of view expressed over a cup of coffee in the cafeteria. At UMSL, as is the case with the majority of universities and colleges, themselves made the financial commitment necessary to construct the facility and a

Five Students needed for Program Board

THE UNIVERSITY PROGRAM BOARD advises the director of programming in the promotion and arrangements for a variety of cultural, social, and cocurricular activities. The

Program Board is c
to be members of
at times a min
CONCERTS A
performers ar
THEATRE E

Name _____

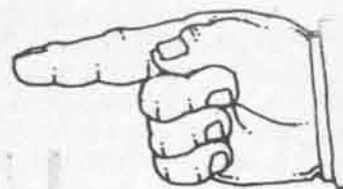
Address _____

Phone No. _____

Student No. _____

I am interested in serving on the U. Center Advisory Board

I am interested in serving on the Program Board



Clip and drop
at the
info desk
before 4 p.m.
Oct. 5

HEWLETT-PACKARD INTRODUCES PROFESSIONAL BUSINESS CALCULATORS FOR A STUDENT'S BUDGET.

BUSINESS MODELS STARTING AT JUST \$75*
Now you can get the same quality, durability, and features of a Hewlett-Packard professional calculator—at a price you can afford. Introducing Series E for business.

DESIGNED FOR STUDENTS.

Easy-to-read displays. Larger, brighter LED display with commas to separate thousands make Series E calculators easier to read during long hours of study.
Built-in diagnostic systems. Because you'll be working on many new and challenging problems, Series E calculators have diagnostic systems that tell you:
1) when you've performed an incorrect operation;
2) why it was

incorrect; 3) if the calculator isn't working properly.
Accuracy. It's important in college. So we improved the algorithms to give you the confidence that your answers are always precise and complete.

FROM BASIC BUSINESS TO ADVANCED PROGRAMMABLE.

The HP-37E. Business Management. \$75* Basic business/finance. Gives Present Value, Payments and Future Value calculations simultaneously. Discounts, %'s, mark-ups, and amortization schedules. Statistics with trend-line forecasting. 5 financial and 7 user memories.

The HP-38E—Advanced Financial Programmable. \$120* Solves routine and complex problems at the touch of a key—no previous programming experience necessary. Internal Rate of Return and Net Present Value for up to 1,980 cash flows in 20 groups. 2000-year calendar. 5 financial and 20 user memories. Up to 99 program lines.

HEWLETT-PACKARD IS WITHOUT EQUAL.

All Series E calculators use RPN logic exclusively. If you've never tried it, you're in for a big surprise. It lets you solve problems the way you naturally do in your mind. Straightforward.

Logical. No worrying about complicated hierarchies or parentheses. It's the shortest possible distance between the question and the answer.

SEE FOR YOURSELF.

To help you select the calculator that's right for you, we've prepared a booklet entitled, "The Student's Choice...the Logical Choice." Pick up a copy at your bookstore or nearest Hewlett-Packard dealer when you stop by to see Series E. For the address,

CALL TOLL-FREE 800-648-4711

except from Hawaii or Alaska.

In Nevada call 800-992-5710.

While you're there, be sure to look at our other professional calculators: the advanced programmable HP-29C and HP-19C with printer; and the HP-67 mag-card programmable.

But do it soon. A Hewlett-Packard professional calculator priced for a student's budget is something you can't afford to pass up.



HEWLETT **hp** PACKARD

Dept 0000, 1000 N. E. Circle Blvd., Corvallis OR 97330

*Suggested retail price excluding applicable state and local taxes—Continental U.S.A., Alaska & Hawaii.

Displays are photographed separately to simulate actual appearance.

616/72

Marvella Bayh

I have had breast cancer and a mastectomy to cure it. But it didn't change my life—or my femininity. Of course, right after surgery, I was discouraged. But then I received a visit from an American Cancer Society volunteer. She gave me a ball and a rope. And she showed me how to use them to strengthen my arm. She gave me information about breast forms and how to fit my clothes. Then she told me that she, too, had had a mastectomy. That's when she gave me faith. I knew then, if other women could do it, so could I. And I did.

If you know a cancer patient who needs help, call your Unit of the American Cancer Society. We can give people information and counseling on all kinds of cancer. We can also give them hope. I know. Because I had cancer and lived.

American Cancer Society.
Call us for help.

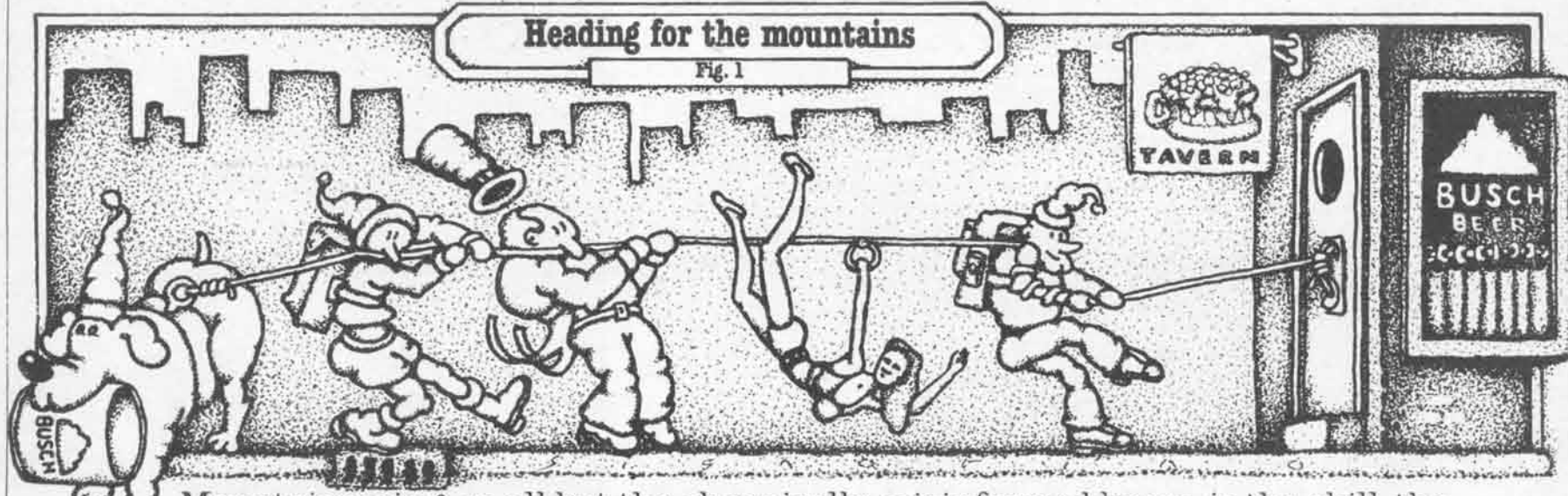
KNOCK 'EM DEAD

...with your writing and reporting skills. The Current needs writers for all sections (news, features, arts, sports) as well as artists and photographers.
Call 453-5174



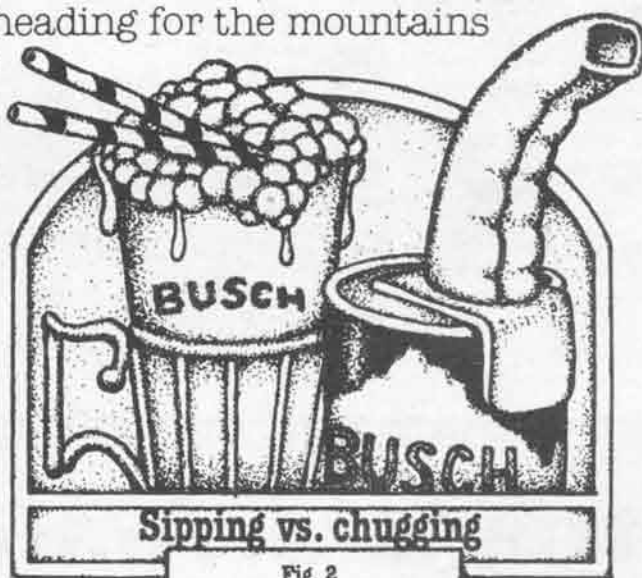
Mountaineering #3.

METHODOLOGY



Mountaineering, as all but the chronically misinformed know, is the skill, the science and the art of drinking Busch Beer. It begins by heading for the mountains (i.e., a quick jaunt to your favorite package emporium or wateringhole) and ends by downing the mountains (i.e., slow slaking swallows of the brew that is Busch).

¶ However, between those two points lies a vast area of personal peccadilloes sometimes called technique and sometimes called methodology (depending on your major). Hence, this ad. ¶ Sipping vs. chugging. Both have their merits, of course. But generally speaking, except for cases of extreme thirst or a leaking glass, sipping is the more prudent practice for serious, sustained mountaineering. ¶ Next,



the proper position. Some swear by sitting; others by standing. Suffice it to say that the most successful mountaineers are flexible, so you'll find both sitters and standers.

(Except on New Year's Eve, when it's almost impossible to find a sitter.) ¶ Which brings us to additives. Occasionally a neophyte will sprinkle salt in his Busch; others mix in tomato juice; and a few on the radical fringe will even add egg. While these manipulations



can't be prohibited (this is, after all, a free country), they are frowned upon. Please be advised that purity is a virtue, and the natural refreshment of Busch is best uncompromised.

¶ Finally, there's the issue of containers. Good taste dictates a glass be used. But bad planning sometimes prevents that. If you find yourself forced to drink from the can, you should minimize this breach of etiquette. Be formal. Simply let your little finger stick out stiffly (see Fig. 4). Happy Mountaineering!



Don't just reach for a beer. **BUSCH** Head for the mountains.

sports

Baseball pro, Tobias, to play for UMSL Cagers

Jeff Kuchno

There is good news for UMSL basketball followers. Contrary to earlier speculation, Grayling Tobias has returned to UMSL and will don his sneakers this winter for Coach Chuck Smith's basketball squad.

However, when the basketball season is over, Tobias will trade in his sneakers for baseball spikes. Unfortunately, Tobias will not be performing for the UMSL baseball team and there is a good reason why. Grayling Tobias is a professional baseball player.

According to an NCAA (National Collegiate Athletic Association) rule, an athlete may not compete in a particular sport as an amateur if he or she is already a professional in that sport. However an athlete may compete in one sport as an amateur and another as a professional. This rule applies in the case of Tobias.

Tobias has started as guard for the Rivermen ever since his freshman year. He came to UMSL from McCluer High School, where his basketball team won the state championship in 1974-75. The slender 5 foot, 11 inch Tobias averaged a respectable ten points per game his freshman year. He poured in

14.8 points per outing his sophomore year, and then averaged ten points last season. He hopes to score in double figures again this season.

Most people around UMSL are familiar with Tobias' achievements as an amateur, but his professional experience is a different story.

Last June, Tobias was drafted by the Montreal Expos and signed by Expo scout Bob Oldis. He was assigned to Jamestown, N.Y., of the New York Rookie League, where he hit over .300 in his first week of action. Tobias, who never hit below .350 at UMSL, is regarded as a speedy baserunner and a fine defensive outfielder with an "average" throwing arm. In 1977, Tobias stole 38 bases and played an errorless centerfield for UMSL. For his efforts, he was named to the honorable mention all-American team.

Tobias' stint at Jamestown was a short one, as he played only eight games. In a move that caught Tobias by surprise, the Expos informed him he was being promoted to West Palm Beach of the Florida State League.

"Jim Fanning, who is the chief of player development for the Expos, saw one of my better games at Jamestown," said To-

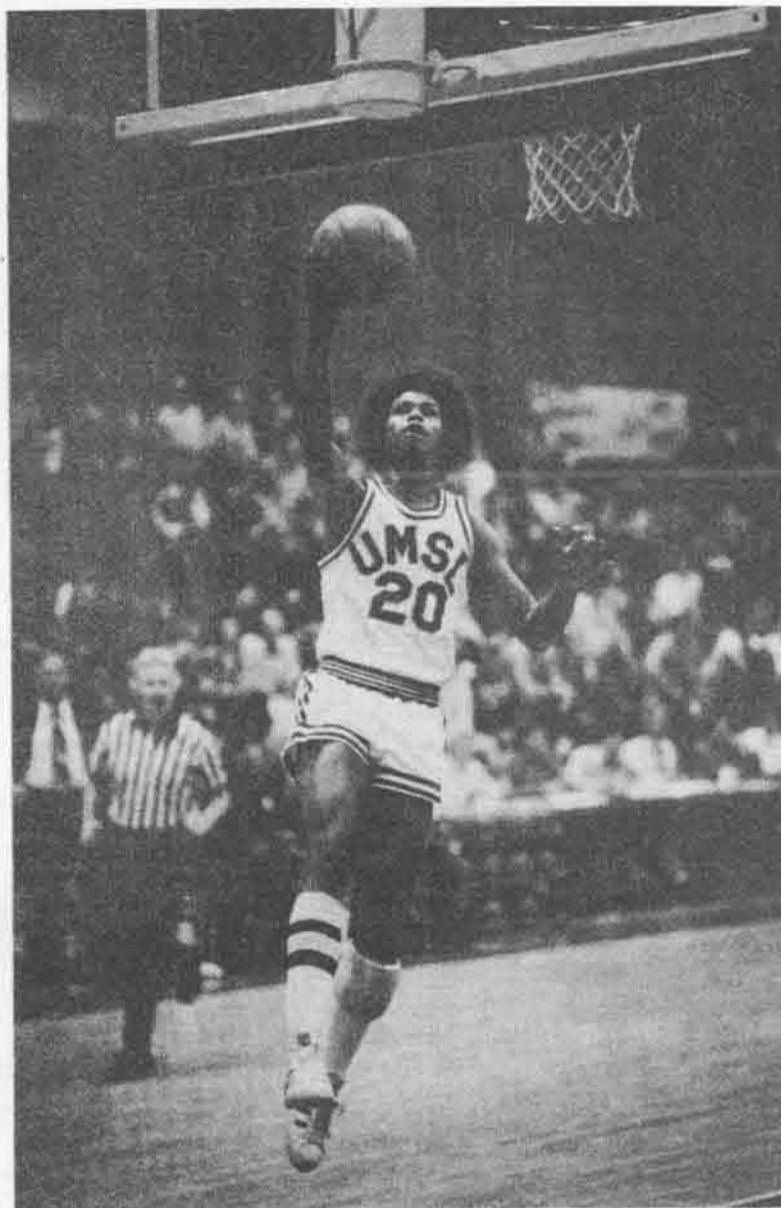
bias. "I had a couple of hits and a few good catches that night and apparently they (the Expos) thought I was ready to move up. I was surprised, but happy."

Tobias was very happy with the promotion, at least for the first few weeks. "I started my first 15 games in centerfield and was hitting about .300," said Tobias. "But then I started getting platooned and my average went down. I was playing only once every fourth game. I went into the coach's office and asked why I wasn't playing everyday, he said he wanted to take a look at a few other outfielders who were a few years older than I."

Due mainly to the platooning, Tobias' average ended up at a lackluster .233. "You lose sharpness when you don't play everyday," said the fleet-footed centerfielder. "I need to play every day in order to maintain effectiveness."

The minor league season had ended and it was decision time for Tobias. Was he coming back to school or not? "I was definitely coming back to school unless I would have been drafted into winter ball," he said. Tobias was not drafted and he arrived in St. Louis only one week after classes began.

[See "Tobias" page 20]



MOVIN' ON: Grayling Tobias drives for two during one of last season's home basketball games [photo courtesy of OPI].

Intramural Activities Brewing

Budweiser

Upcoming Events

Activity	Deadline	Days	Times
Swimming Meet	September 27	Wed	3:00 — 5:00
Bowling League	September 28	Tues	4:00 — 6:00
Golf Tournament	Registration at Course	Fri	All day
Wrestling Meet	October 5	Wed	3:00 — 5:00

Registration for all intramural activities will be in room 225 of the Mark Twain Building.

WHAT'S HAPPENING

Last week marked the beginning of the intramural touch football and volleyball leagues. First play was completed in the tennis tournament with players vying for championships in the advanced and intermediate divisions, women's open division and open doubles.

Listed below are the results of the touch football and volleyball leagues through September 21:

TOUCH FOOTBALL

League A	League B	League C
Tau Kappa Epsilon 2-0-1	Return of Tike 1-0-0	Muellers Mules 2-0-0
Pi Kappa Alpha 1-1-1	Studs-Suds 1-1-0	UMSL Players 2-0-0
Sigma Tau Gamma 0-0-2	NSB 1-1-0	No Names 0-1-0
Sigma Pi 0-2-0	Bomb Squad 0-1-0	42nd St. Bombers 0-1-0
		Raiders 0-2-0

coed volleyball

The Netters	2-0
River Rats	3-1
The Irish Setters	1-1
Flee Hee Hah	1-1
Teke-les	1-3
Wombats	0-2

RECREATION

Don't forget the swimming pool is open daily, Mon. — Fri., noon — 2:00, with noon — 1:00 reserved for lap swimming only. The pool is also open Tuesday, Wednesday and Thursday evenings 6:30 — 9:00 and weekends 1:00 — 6:00.



UMSL kickers down Mo. Southern, 4-1.

Michael Collins

The UMSL Rivermen soccer team evened their record at 2-2 with an impressive 4-1 victory over Missouri Southern College of Joplin, Mo.

"It was the best game of the season offensively," said Bob Herleth, assistant coach. The team outshot their opponents 37-3 and controlled the game leaving the defense untested most of the time.

Pat Sullivan, UMSL Sports Information director, feels the defense again played a very strong game, as they didn't allow a single shot by Missouri Southern in the entire first half.

"Coming into Saturday's contest, Missouri Southern displayed a 4-1 record and was trying to avenge 1-0 and 2-1 losses from years before," Sullivan said. But the Lions were denied early as the Rivermen continued their streak of not allowing a

goal in the first half of any game this season.

Meanwhile, UMSL tallied once in the first half and three more times in the second to crush their opponents.

"We have been very strong in goal and have the potential to explode on offense," coach Herleth pointed out. Against the Lions, the offensive punch was led by Mike Flecke with two goals. Tim Tettabel and Mike Bess each scored a goal while

Keith Grassi added two assists, as the Rivermen exploded for three goals in three-and-one-half minutes of action in the second half.

Team statistics so far this season are impressive. The Rivermen have outscored opponents 12-6, four goals to zero in first half action and eight-six in second halves. They have outshot opponents 78-66 and had 11 assists.

Grassi leads scoring with two goals and four assists totaling six points. Tettabel, with two goals and three assists, and Flecke with four goals and one assist, are right behind with five points. Fourth in scoring is Bess with two goals and one assist.

The team is not working on anything different in practice this week, but Herleth said he felt he needed to strengthen defense to obtain a shutout. He is working toward this goal with more hard work as he prepares the team for their next game.

The Rivermen's next match will be against Xavier University at Cincinnati at 1:30pm September 30. The Muskateers have ten returning starters from last year's team, and are displaying a 3-1-1 record this season. After the game Saturday, the Rivermen face a very tough SIU-Edwardsville team on Sept. 31 at 1:30pm at Edwardsville.

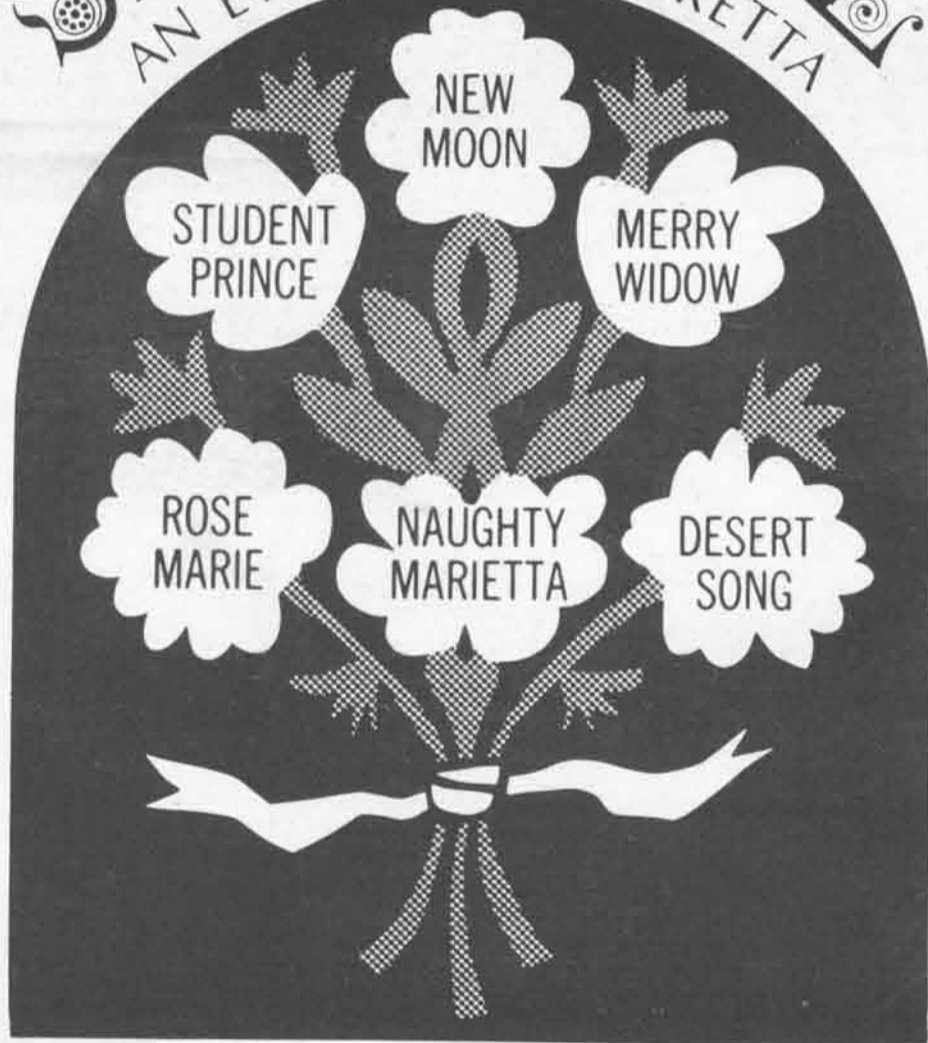
Men's 1978-79 Tennis tryouts begin Oct. 1

Tryouts for the men's varsity tennis team will be held this Monday, Oct. 1. All men who are interested in trying out should report to the tennis courts, located behind the Mark Twain Building, 2pm Monday. Practice will be held everyday under the direction of Coach Randy Burkhardt.

UMSL CONCERT & LECTURES COMMITTEE PRESENTS

SERENADE

AN EVENING OF OPERETTA



October 11, 1978

8:30 P.M. - J.C. Penney Auditorium

\$3.50 UMSL Students
\$5.00 UMSL Faculty and Staff
\$6.00 Public

Tickets on sale at the University Center Information Desk.

Winner of Three 1977 French Academy Awards
Including BEST PICTURE and BEST DIRECTOR
ALAIN DELON in JOSEPH LOSEY'S



featuring **Jeanne Moreau** with JULIET BERTO • MICHELLE LINGUALPI • JEAN BOUSQUET • FRANCESCA BERGÉ
Produced by QUARTET FILMS INC. | Directed by JOSEPH LOSEY

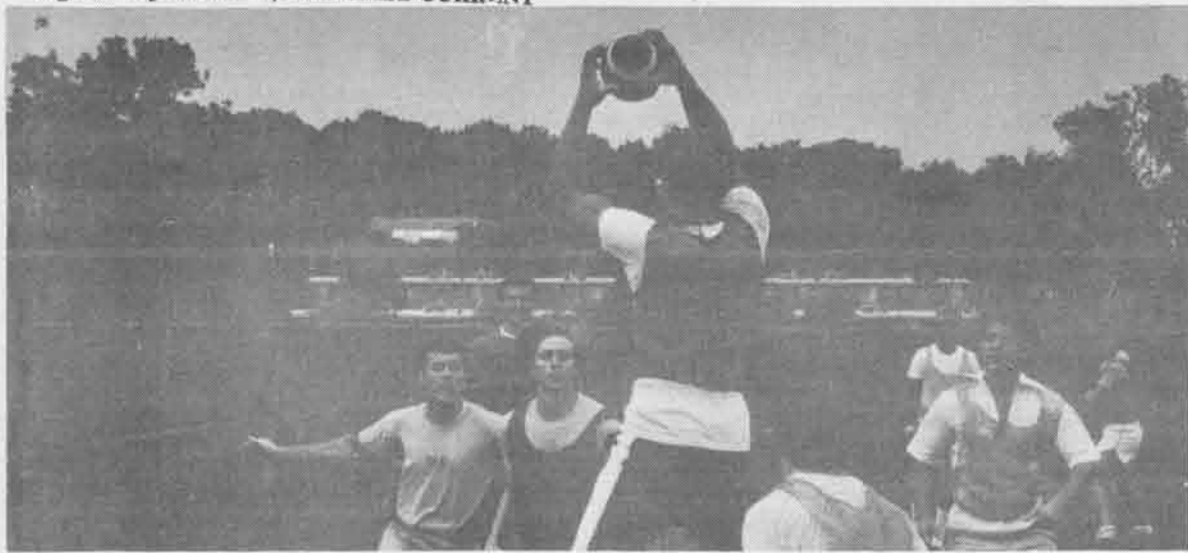
HELD OVER
2ND WEEK

SHADY JAK THEATRE
FORSYTH & HANLEY

this
man
needs
help



he needs more things to clutter
up his desk, so send in a letter to
the editor. write on.....



BAD COMPANY: Intramural football action as receiver snares ball in a crowd. After the first week of action, division leaders are: Tau Kapa Epsilon in league A, Return of Tike in league B, and Muellers Mules in League C [photo by Dale Nelson].

Tobias

Tobias feels education is an integral part of his future. "It's good taht I have three years of college behind me," he said. "The young kids who come right out of high school and into pro ball have nothing to fall back on if they don't make it. I plan to get my degree in secondary Physical Education sometime this year."

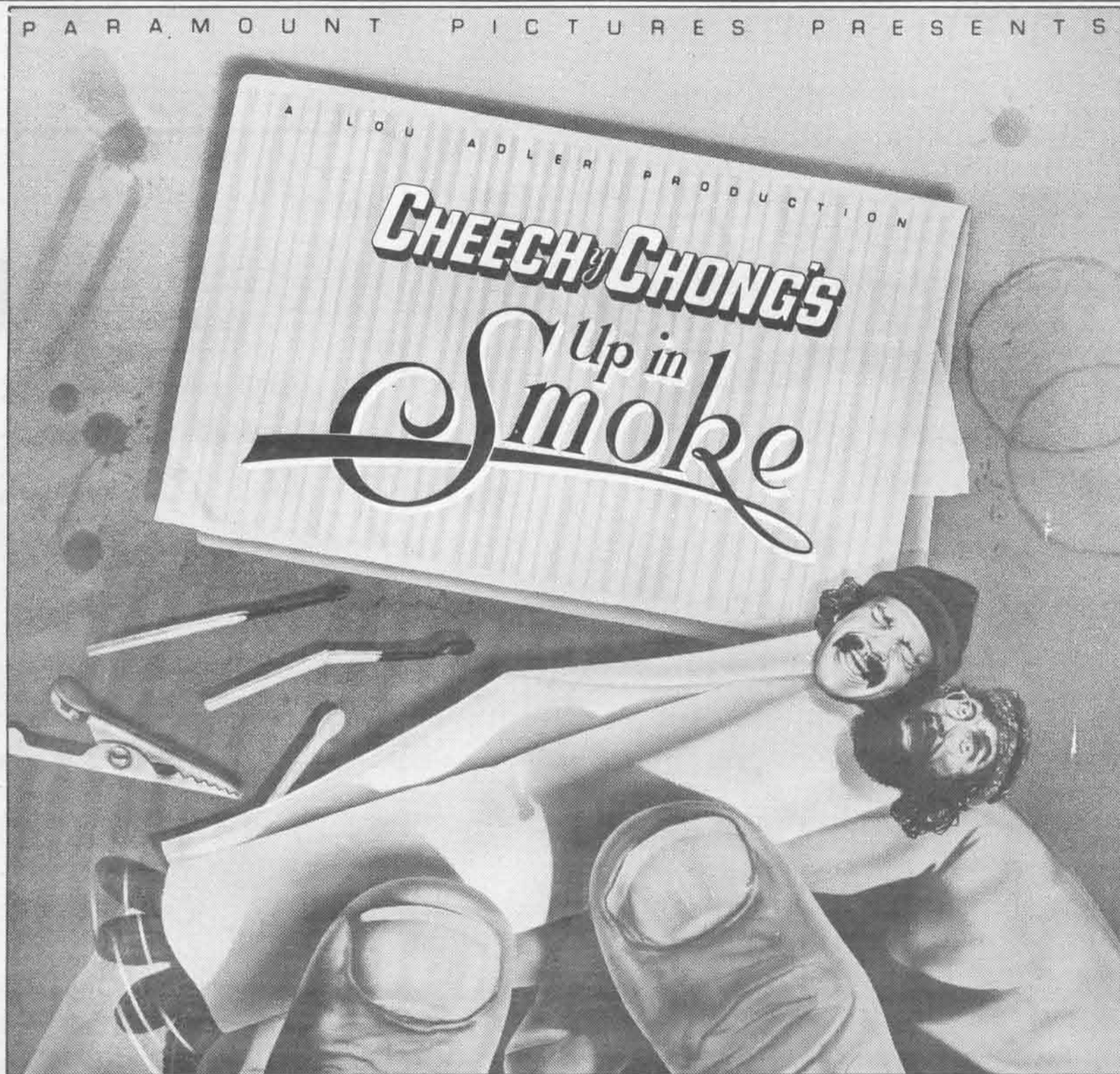
Tobias' decision to return to school was a particularly easy one, but what did the Expos think about his playing basketball this winter? "The Expos scout, Bob Oldis, told me I could play basketball at UMMSL," said Tobias, who plans on becoming a coach after his playing days are over.

Playing basketball at UMMSL

should be beneficial for Tobias, who hopes to improve his physical condition during the winter. In addition to playing basketball, Tobias will be a frequent habitant of the weight room, where he will attempt to build up his upper body so he will be stronger when the baseball season arrives. However, Tobias won't be thinking about baseball when he is on the basketball court.

"I wouldn't play basketball if I din't give 100 per cent in helping the team," he said.

Tobias also offered a prediction concerning himself. "I plan to make it to the big leagues," said the 21-year-old flychaser. "There is no use playing in the minor leagues if I didn't think I could make it to the majors."



STARRING **CHEECH MARIN AND TOMMY CHONG**
TOM SKERRITT EDIE ADAMS STROTHER MARTIN
 AND **STACY KEACH** AS SGT. STEDENKO
 WRITTEN BY **TOMMY CHONG AND CHEECH MARIN**
 PRODUCED BY **LOU ADLER AND LOU LOMBARDO**
 DIRECTED BY **LOU ADLER** PARAMOUNT

©1978 Paramount Pictures Corporation.
 All Rights Reserved.
 A Paramount Picture.



Original soundtrack album available on Warner Bros. Records and Tapes.
 Under the direction of Ode Sounds & Visuals.

R RESTRICTED Under 17 requires accompanying Parent or Adult Guardian

Don't go straight to see this movie!

STARTS FRIDAY
 AT THESE FIVE THEATRES

CYPRESS VILLAGE
 10951 ST. CHAS. RK. RD.

DES PERES 4 CINE
 1-270 & MANCHESTER

GRANDVIEW
 1-270 & WASHINGTON

STADIUM 2 CINE
 ACROSS FROM BUSCH STADIUM

SOUTH COUNTY
 LINDB. & LEMAY FERRY